



Agricultural Land Commission Local Government Stakeholder Survey

Prepared for:

Kim Grout, CEO

Lindsay McCoubrey, Planner

January 26, 2017

The logo for 'sentis' features a stylized 3D cube icon composed of green and grey faces.

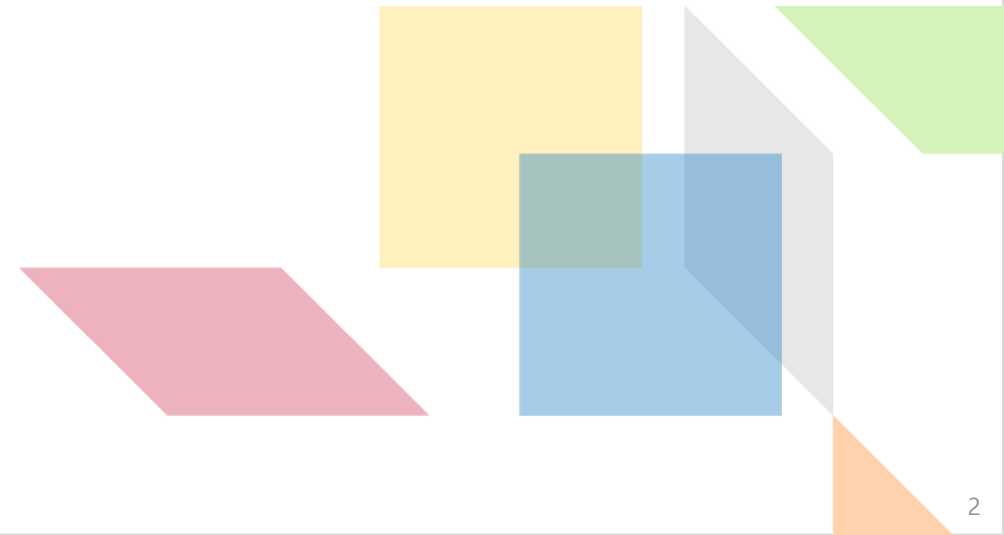
Contents

03 Background, Objectives & Methodology

05 Summary

08 Survey Results

25 Appendix



The logo for 'sentis' features a stylized 3D cube icon composed of green and grey faces.

Background, Objectives & Methodology

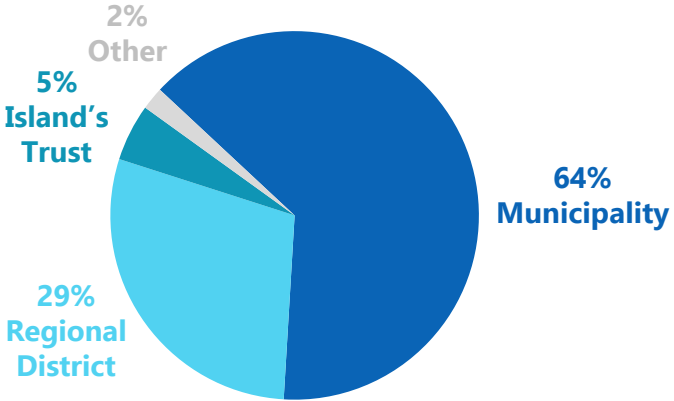


Background & Objectives

- › The Ministerial Order No. M072 sets out a series of goals for the Agricultural Land Commission (ALC). One goal is Local Government Engagement. The Minister expects that the commission will work with local governments to recognize agricultural land uses and enforce the Agricultural Land Commission Act within the context of local planning and zoning such as official community plans, land use bylaws, growth strategies, agricultural plans and related policies.
- › To help ensure that it is effectively engaging with local governments, the ALC commissioned Sentis Research to survey local government staff and elected officials whose work involves the Agricultural Land Reserve (ALR). The survey addressed the following objectives:
 - › Identify top bylaw enforcement and compliance challenges
 - › Identify top land use planning challenges
 - › Determine how staff learn about matters related to the ALR
 - › Measure awareness and helpfulness of ALC policies
 - › Measure frequency and type of contact that stakeholders have with the ALC
 - › Measure use of the ALC website and Application Portal
 - › Determine how stakeholders prefer to receive information from the ALC

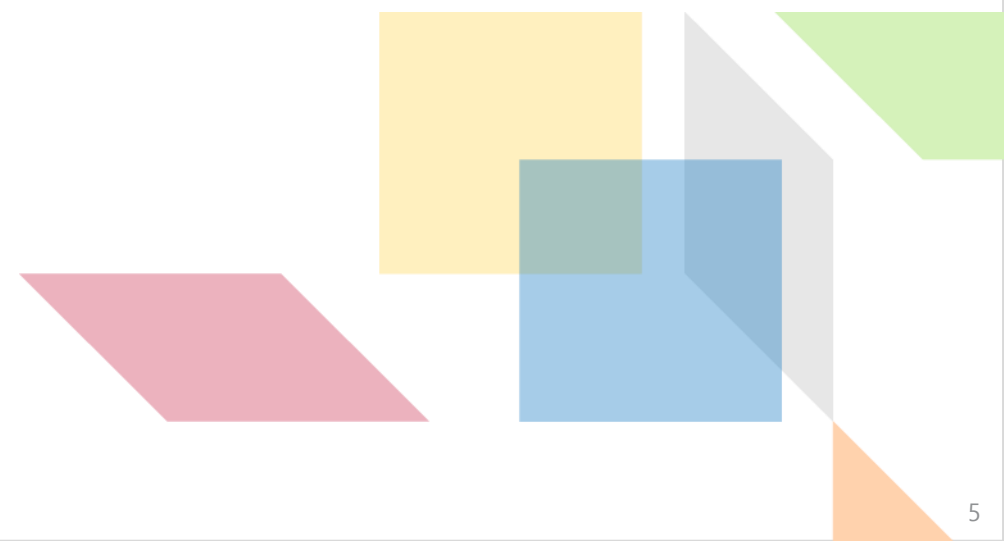
Methodology

- › The ALC provided Sentis with a list of email addresses for 288 local government contacts and Regional District planning managers. Email invitations were sent by Sentis on behalf of the ALC, asking the recipient to forward the email to any individual(s) at their organization who have contact with the ALC and/or whose work involves land use planning, policy or enforcement within the ALR.
- › The survey was open for participation from December 8 to 21, 2016.
- › Overall, a total of 251 local government stakeholders completed the survey. The final sample distribution, in terms of government type and region, is generally representative of the actual population. The breakdown of the final sample by government type is shown in the chart below.



A small icon of a 3D cube with green and grey faces, identical to the one in the header.

Summary



Learning About the ALR and ALC Policies

There are three main ways that stakeholders learn about changes or matters related to the ALR: co-workers, ALC Information Update emails and the ALC website.

Virtually all stakeholders are aware that the ALC adopts Land Use, Procedural and Operational Policies. Six-in-ten stakeholders refer to these policies either very or somewhat often – with stakeholders who work in land use planning/policy being most likely to refer to these policies either very or somewhat often (75%).

The vast majority of stakeholders (86%) find ALC's policies helpful. Suggestions for making the policies more helpful included: simplifying the language and providing examples and scenarios that would help with policy interpretation.

Interacting with the ALC

The three most common reasons that stakeholders contact the ALC are to: discuss an ALR application, for assistance with policy interpretation, and to discuss a proposed land use inquiry by an ALR landowner. Type of contact depends on the role of the stakeholder within the local government, of course. For example, in the past six months, 70% of those working in bylaw enforcement have contacted the ALC regarding the compliance and enforcement process and over half (57%) have submitted a report of possible unauthorized land use in the ALR.

Three-quarters of stakeholders consult the ALC website before they contact ALC staff. Stakeholders generally find useful and relevant information on the site – only 9% attempted to use the website but couldn't find the information they needed. Stakeholders need to contact ALC staff after visiting the website either because they have a very specific question or case or because they require confirmation or documentation from ALC staff.

ALC Application Portal

One-third of stakeholders report using the ALC Application Portal in the past six months. Use of the portal is highest among those working in land use planning/policy (46%) and those working for regional districts (46%). Seventy percent of stakeholders who could provide feedback on the Application Portal Update email communication rated it as helpful.

Interest in Training & Education Options

A strong majority of stakeholders expressed interest in training and education sessions hosted by the ALC. Three-quarters (76%) indicated that they would find Land Use Planner education sessions useful, 72% would find in-person sessions with ALC representatives useful, and 70% would find webinars on the Act/Regulation useful.

Top Challenges

Whether they are considering land use planning or compliance and enforcement, the top challenges for stakeholders are unauthorized land use in the ALR and additional dwellings.

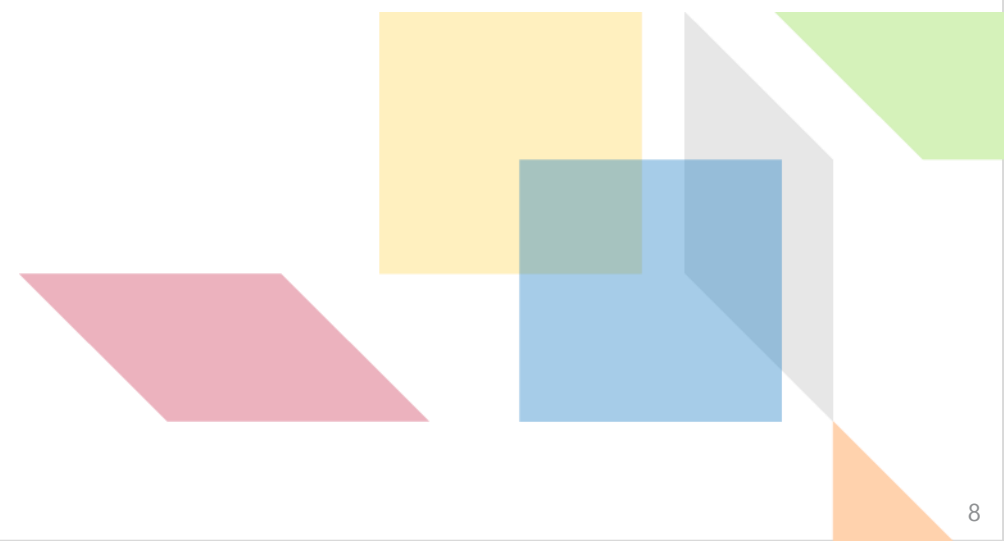
Stakeholders generally view the ALC as an effective partner in helping them address unauthorized land use in the ALR – 82% of stakeholders rated their relationship with the ALC as collaborative.

Support for Changing the ALC Act

There is strong support for changing the ALC Act to allow the ALC to collect the ALC's portion of the fee directly. Only 2% of stakeholders express that they are against revising the Act for this purpose.

A small graphic element for the title, consisting of a green and grey 3D cube icon.

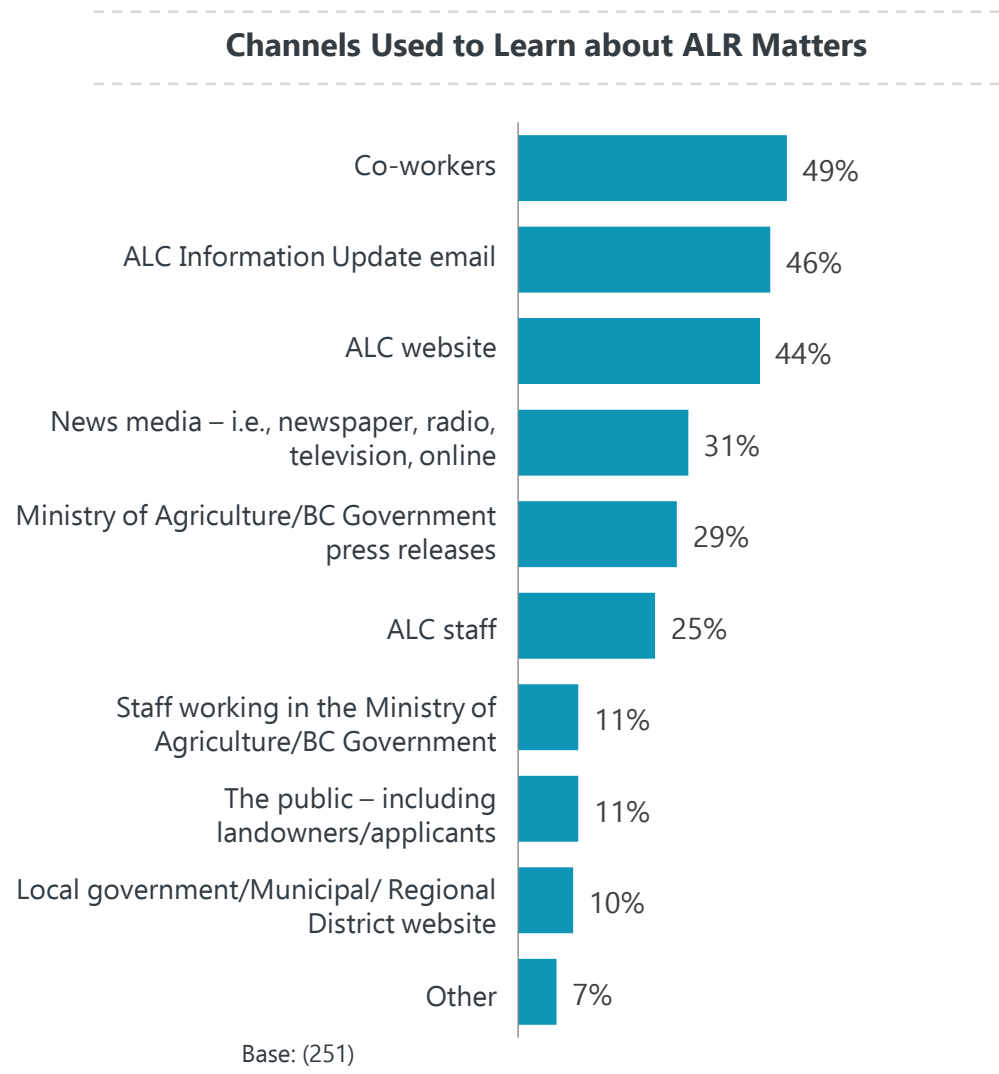
Survey Results



Channels Used to Learn about ALR Matters



- › Half of stakeholders typically learn about changes or matters related to the ALR from co-workers.
- › The ALC’s online channels are also a common means of communication, with the Information Update emails and the ALC website informing 46% and 44% of stakeholders, respectively.
- › News media and press releases help keep roughly three-in-ten participants informed, while one-quarter are typically informed by ALC staff directly.
- › Stakeholders working in land use planning/policy are the group most likely to learn about matters related to the ALR from the ALC website (59%) and ALC staff (32%).

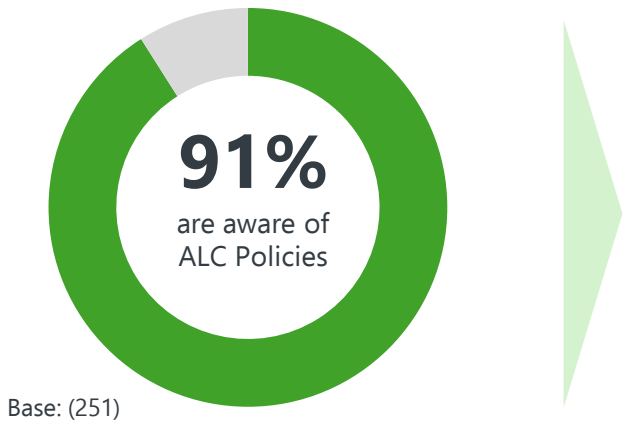


Note: percentages may add to more than 100% given that it is a multiple response question.

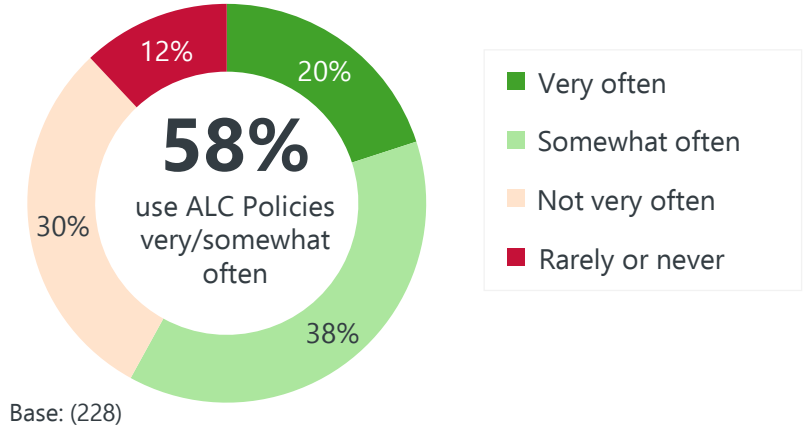
Q4. How do you typically learn about changes or matters related to Agricultural Land Reserve (ALR) land use policy, planning, or enforcement (e.g., changes to the application process, the ALC Act, ALR Regulations)? *Select all that apply.*

- › Awareness of ALC Policies is very high – nine-in-ten stakeholders are aware that the ALC adopts various Land Use, Procedural and Operation Policies.
- › When it comes to how frequently the policies are referred to, just under six-in-ten of those who are aware of the ALC Policies refer to them very or somewhat often.
- › Three-quarters of stakeholders working in land use policy/planning refer to ALC policies either very or somewhat often.

Awareness of ALC Policies

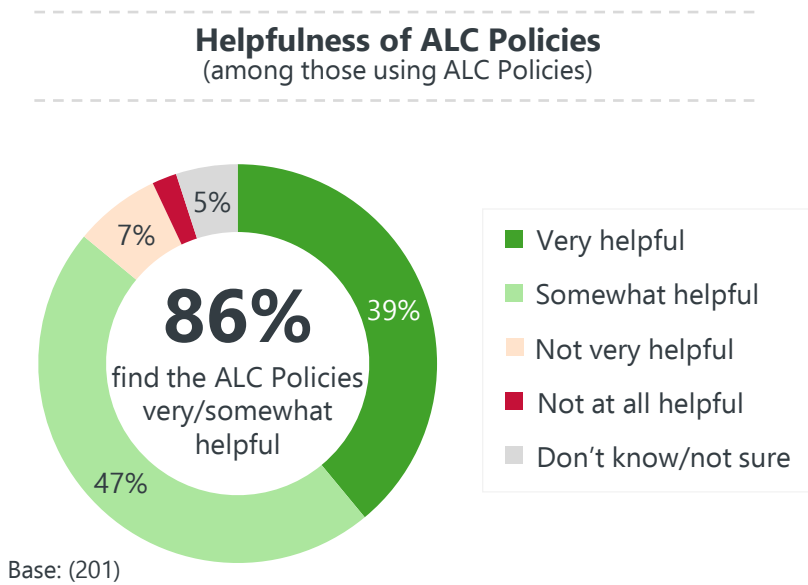


Frequency Using ALC Policies
(among those aware of ALC Policies)



Q5A. Before this survey, were you aware that the ALC adopts various Land Use, Procedural and Operational Policies?
Q5B. How often do you refer to these ALC Policies?

- › Among stakeholders who refer to ALC policies, the vast majority (86%) find them helpful, including four-in-ten who find them very helpful.
- › When it comes to ways that ALC policies could be more helpful, some stakeholders suggest using more clear/simple language, as well as providing example situations that can help with policy interpretation.



Suggestions to Improve Policy Helpfulness

- “ Using simple language instead of legal jargon or technical terms. ”
- “ More detail and perhaps more clear language designed for the public could help... and perhaps case studies outlining situations would be helpful, particularly when things are added or changed. ”
- “ Provide a variety of examples/scenarios for policy application. ”
- “ I think that occasional "refreshers" on policy matters could be added to email updates on policies, e.g. "Did you know...?" or anecdotes that help explain in concrete terms the application of a policy or a decision. ”
- “ The policies are quite wordy and can be technical. A simple checklist or yes/no flow chart could simplify the matters contained within the policies, making the information easier to digest from a lay person's point of view. ”

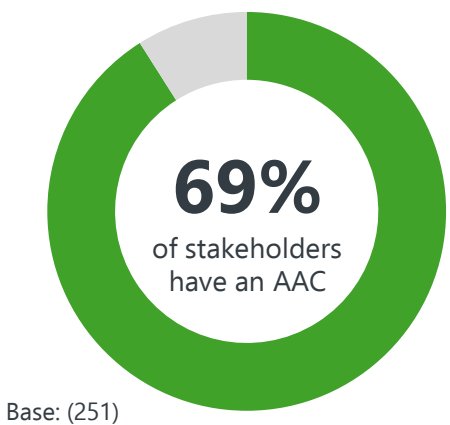
Q5C. How helpful do you generally find these ALC Policies in carrying out your role?

Q5D. Could the ALC Policies be modified to be more helpful to you in your role? If so, how?

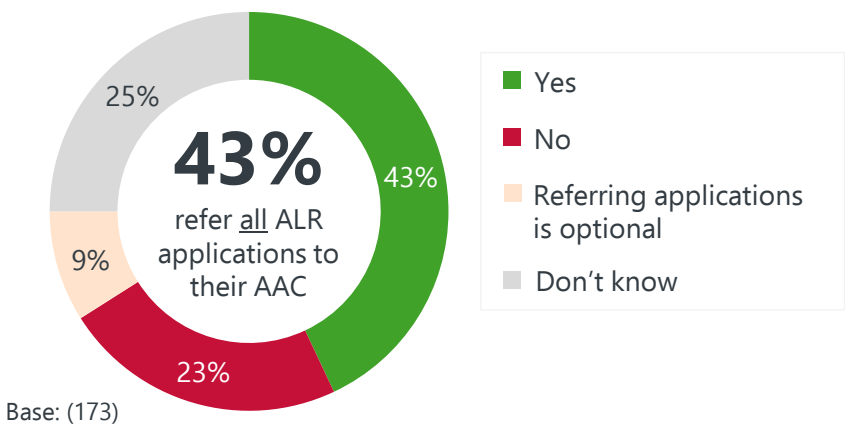
Referring ALR Applications to AAC

- › Seven-in-ten stakeholders report having an Agricultural Advisory Commission (AAC). Among those who do, 43% refer all ALR Applications to their AAC.
- › Just under one-quarter don't refer every ALR application to their AAC, while 9% indicate that the process is optional. The remainder (25%) are unsure of whether or not all ALR applications are referred to the AAC.
- › 58% of stakeholders working in land use planning/policy report that all ALR applications are referred to their AAC.

% Having an AAC

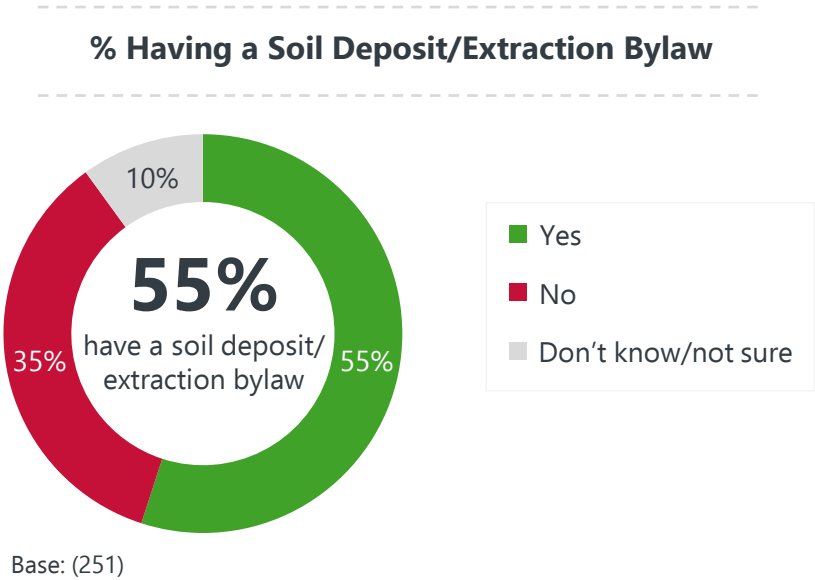


Referring ALR Applications to AAC
(among those who have an AAC)



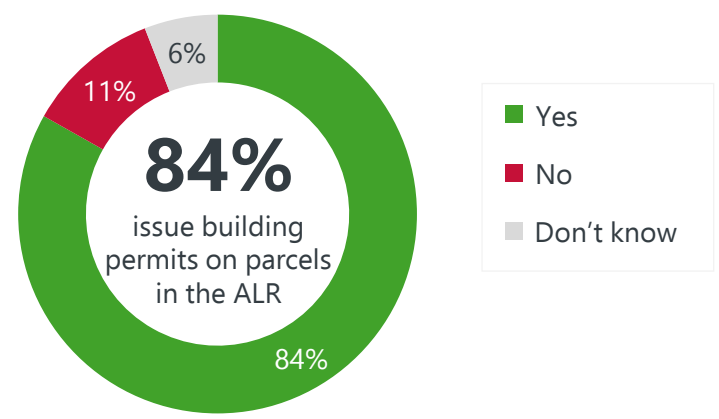
- Yes
- No
- Referring applications is optional
- Don't know

- > Just over half (55%) of stakeholders indicate that their local government has a soil deposit/extraction bylaw.
- > 68% of stakeholders working for municipalities report having a soil deposit/extraction bylaw compared to 26% of stakeholders working for regional districts.



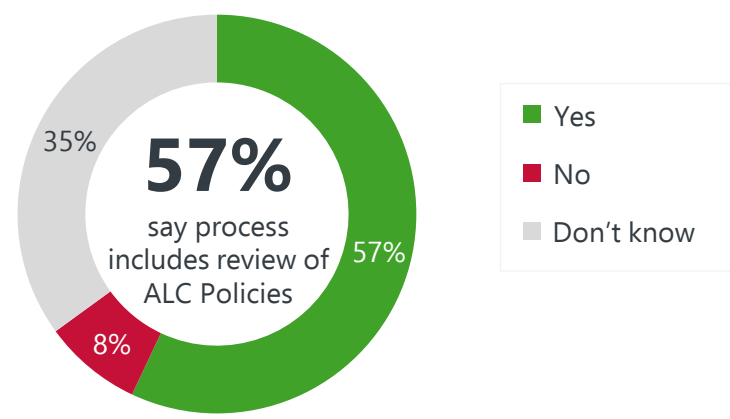
- › Eighty-four percent of stakeholders have a local government that issues building permits on parcels in the ALR.
- › Among those who issue building permits, just over half (57%) indicate that the review process includes a review of ALC Policies, the ALC Act & ALR Regulation.
- › Over one-third of stakeholders (35%) are not sure if the review process includes a review the policies and regulations, leaving only 8% who indicate that the review process does not include this review.

% Issuing Building Permits on Parcels in the ALR
(excluding not applicable)



Base: (238)

% Reviewing ALC Policies when Issuing Permits
(among those issuing building permits)



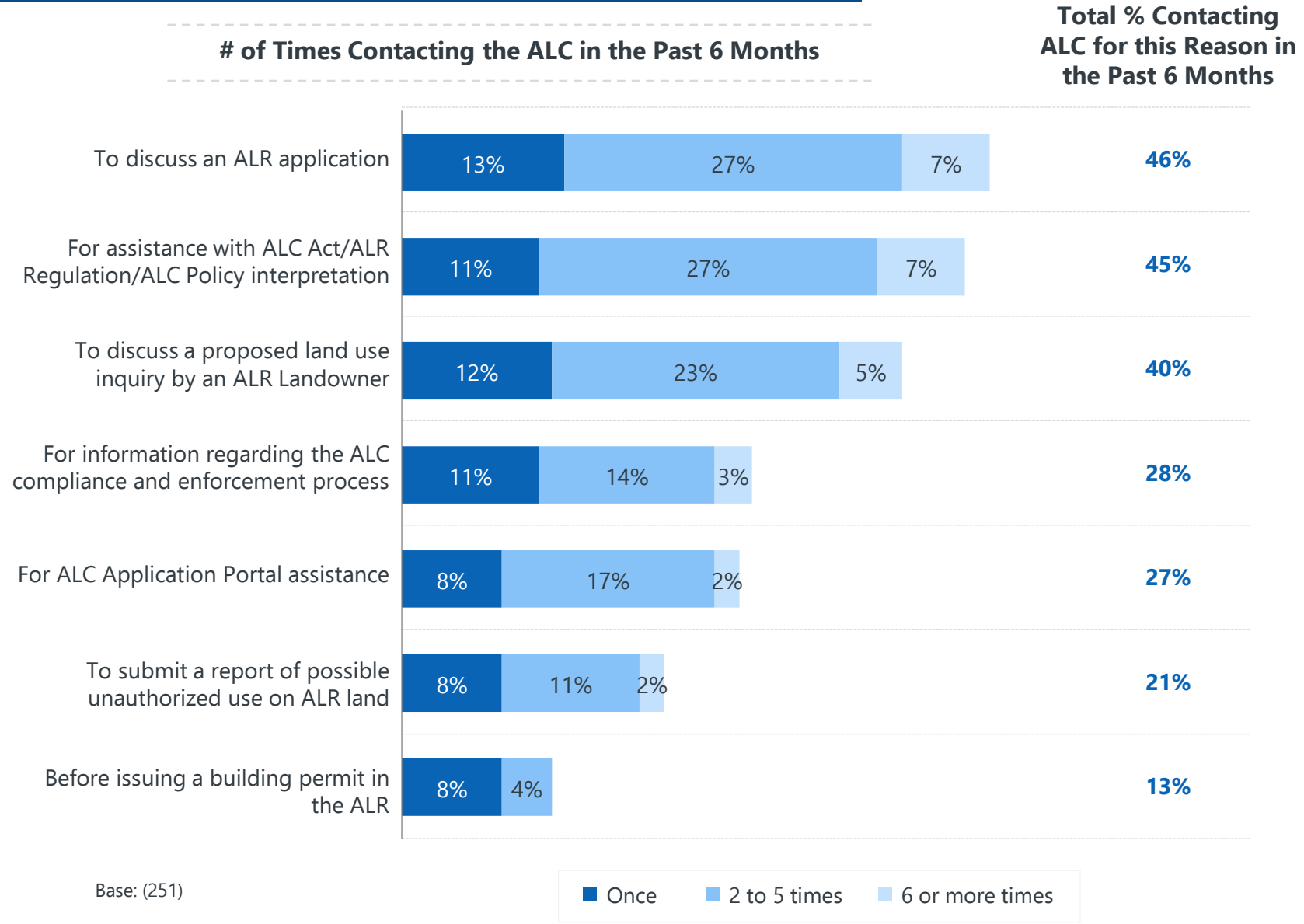
Base: (199)

Q8. Does your local government issue building permits on parcels in the ALR?
Q9. [IF YES] Does the review process for building permits include a review of ALC Policies, the ALC Act & ALR Regulation?

Past 6-Month Interaction with the ALC

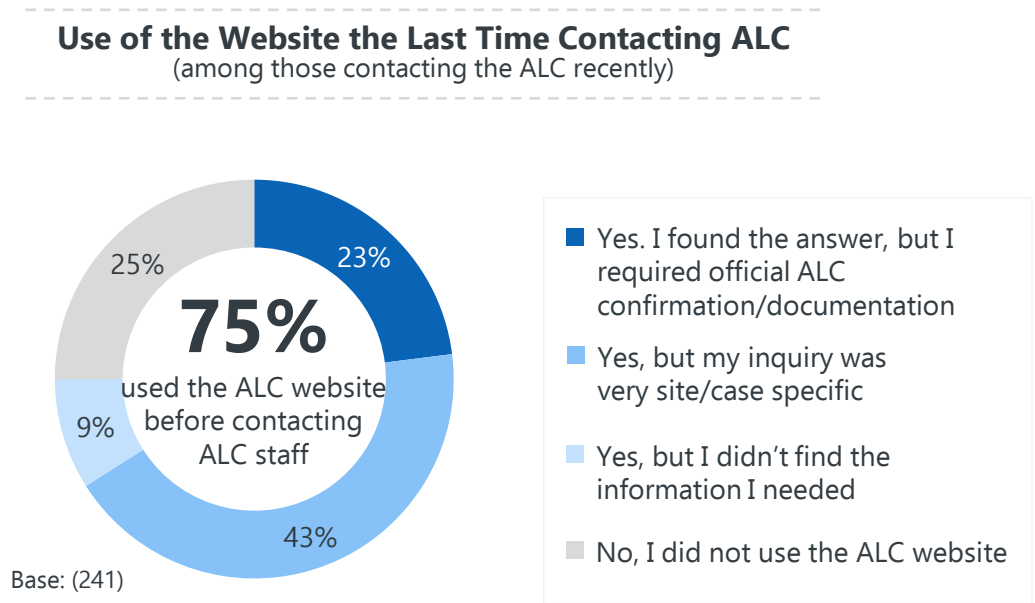


- > The three most common reasons for contacting the ALC are to discuss an ALR application, to get assistance interpreting the Act/Regulation, and to discuss a proposed land use inquiry by an ALR Landowner.
- > 6-in-10 stakeholders working in land use planning/policy have contacted the ALC to discuss an ALR application or for assistance with interpreting the Act/Regulation in the past 6 months.
- > 7-in-10 stakeholders working in bylaw enforcement have contacted the ALC for information regarding the compliance and enforcement process, and over half (57%) have submitted a report of possible unauthorized ALR land use.
- > Compared to stakeholders working for municipalities, stakeholders working for regional districts are more likely to contact the ALC to discuss an ALR application, for assistance with interpreting the Act/Regulation and to discuss a proposed land use inquiry.



Q10. In the past 6 months, how often have you contacted someone at the ALC for each of the following reasons?

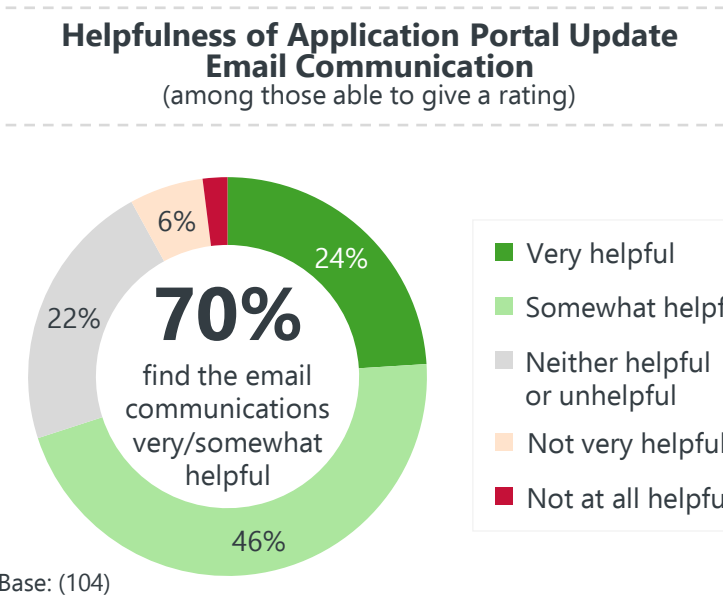
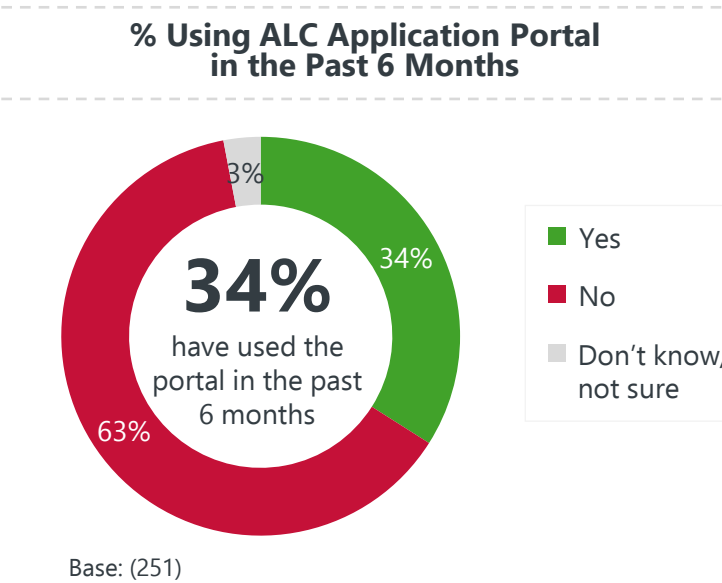
- › Three-quarters of stakeholders consulted the ALC website before contacting ALC staff.
- › Four-in-ten said that their inquiry was too site/case specific, while 23% said they found the answer but required official ALC confirmation.
- › Only 9% attempted to use the website but could not find the information they were looking for.
- › Among the 25% who did not use the ALC website before contacting staff, the most common reasons for not using the website were: having an active file, having a very specific question and having a contact person that they already deal with at the ALC.



ALC Application Portal – Use & Communications



- › Overall, one-third of stakeholders have used the ALC Application Portal in the past six months.
- › Use of the portal is higher among stakeholders working in land use policy/planning – 46% have used the portal in the past six months.
- › Portal use is also higher among stakeholders working for regional districts (46%) than among stakeholders working for municipalities (30%).
- › Among those who are able to assess the Application Portal Update email communications, seven-in-ten find them helpful, including one-quarter who find them very helpful.

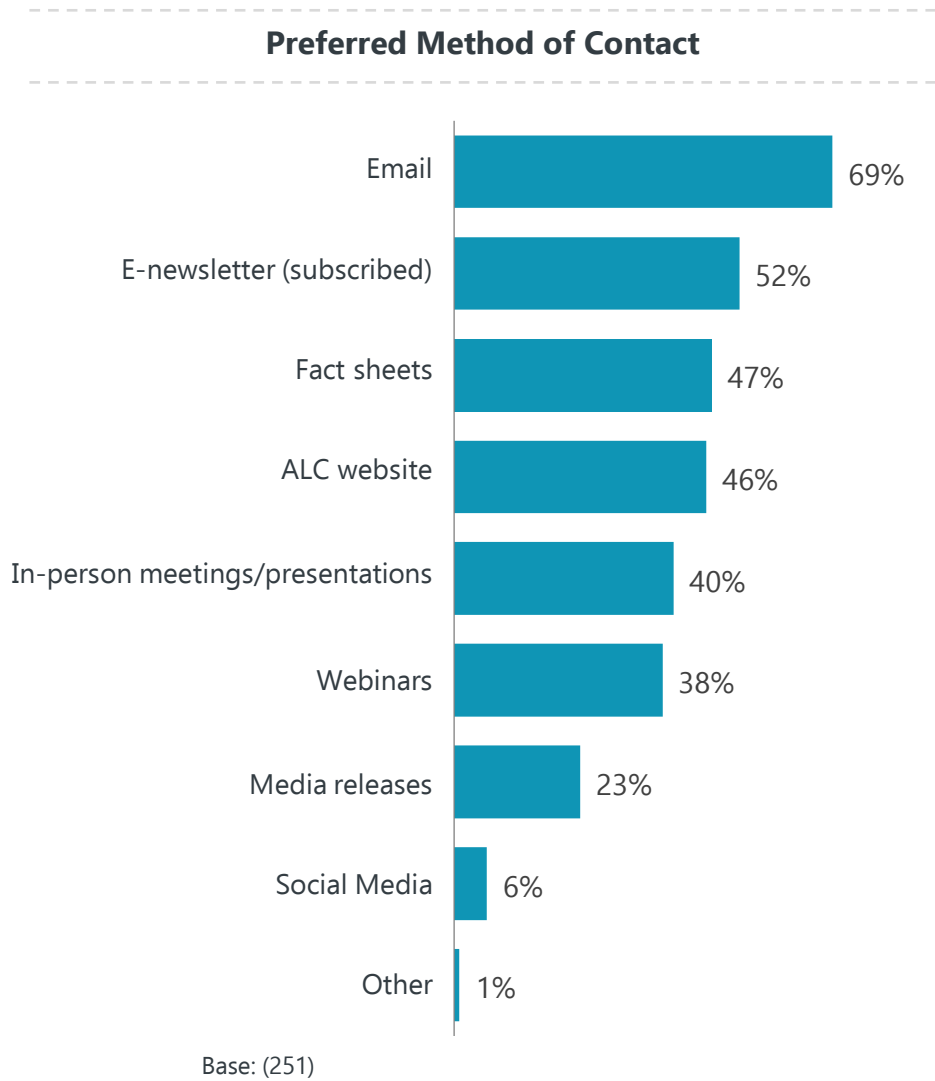


Q12. Have you used the ALC Application Portal in the past 6 months?
Q13A. How helpful has 'Application Portal Update' email communication from the ALC been?

Preferred Channels for Information from the ALC



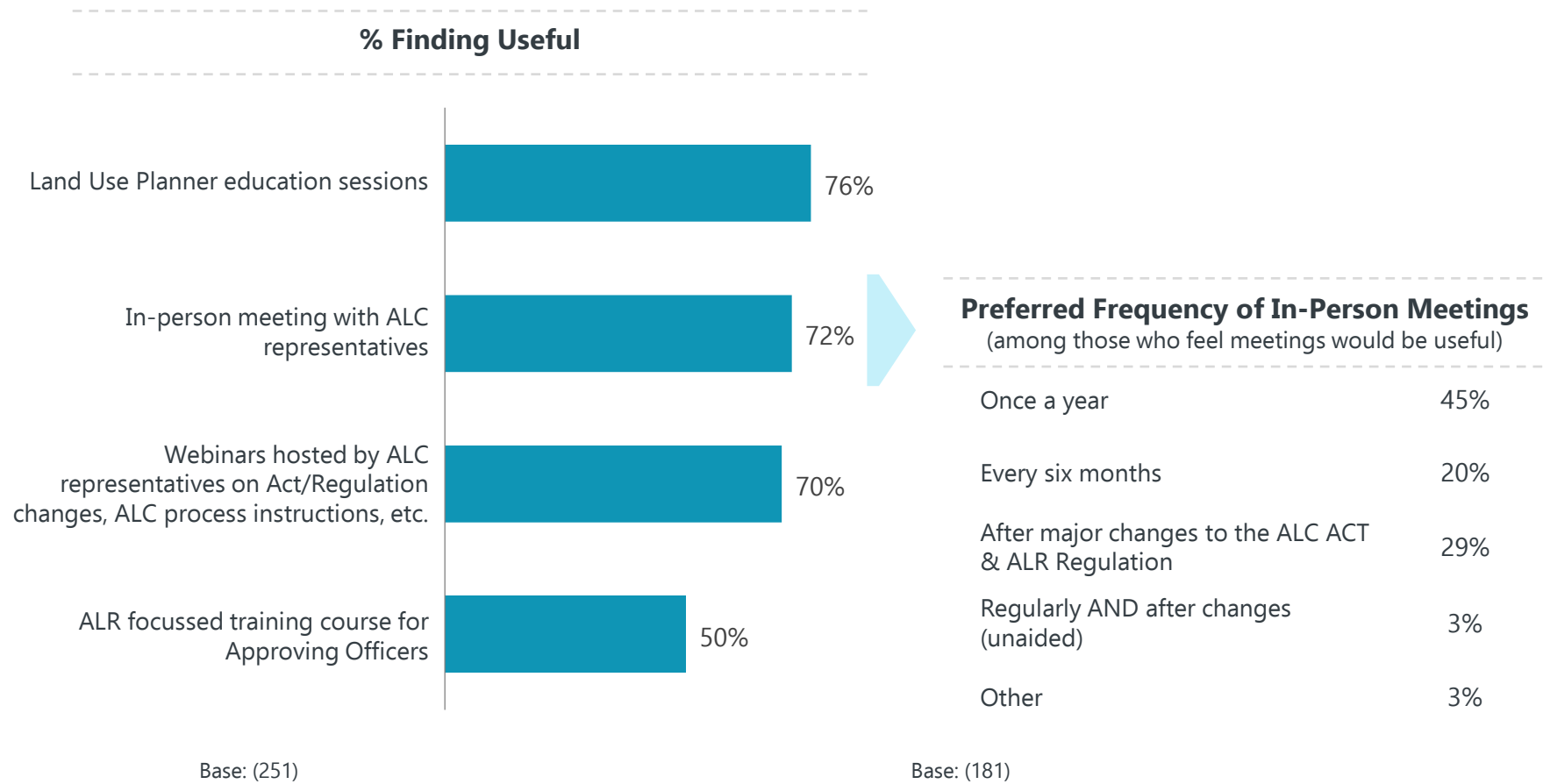
- › When it comes to receiving information about the ALR from the ALC, email is the most preferred channel (69%).
- › Roughly half of stakeholders also prefer getting information via subscribed E-newsletters, fact sheets, and the ALC website.
- › Those working in land use planning/policy are particularly likely to be interested in webinars – 49% said that webinars are one of their preferred channels to receive information about the ALR from the ALC, compared to 38% overall.



Note: percentages may add to more than 100% given that it is a multiple response question.
Q14. How would you prefer to receive information about the ALR from the ALC? *Select as many as apply.*

Other Channels of Contact

- › Stakeholders were presented with four different training/education options and were asked whether or not they would find them useful.
- › Land Use Planner education sessions, in-person meetings with ALC representatives, and webinars hosted by the ALC are considered useful by at least 7-in-10 stakeholders.
- › While those working for municipalities and regional districts would find Land Use Planner education sessions equally useful, those working for regional districts are more likely to find in-person meetings useful, while those working for municipalities are more likely to find a training course for Approving Officers useful.
- › Among those who would like in-person meetings with ALC representatives, just under half (45%) would like annual meetings, while 20% would like to meet every six months. Three-in-ten think the meetings should occur after major changes to the ALC Act & ALR Regulation.

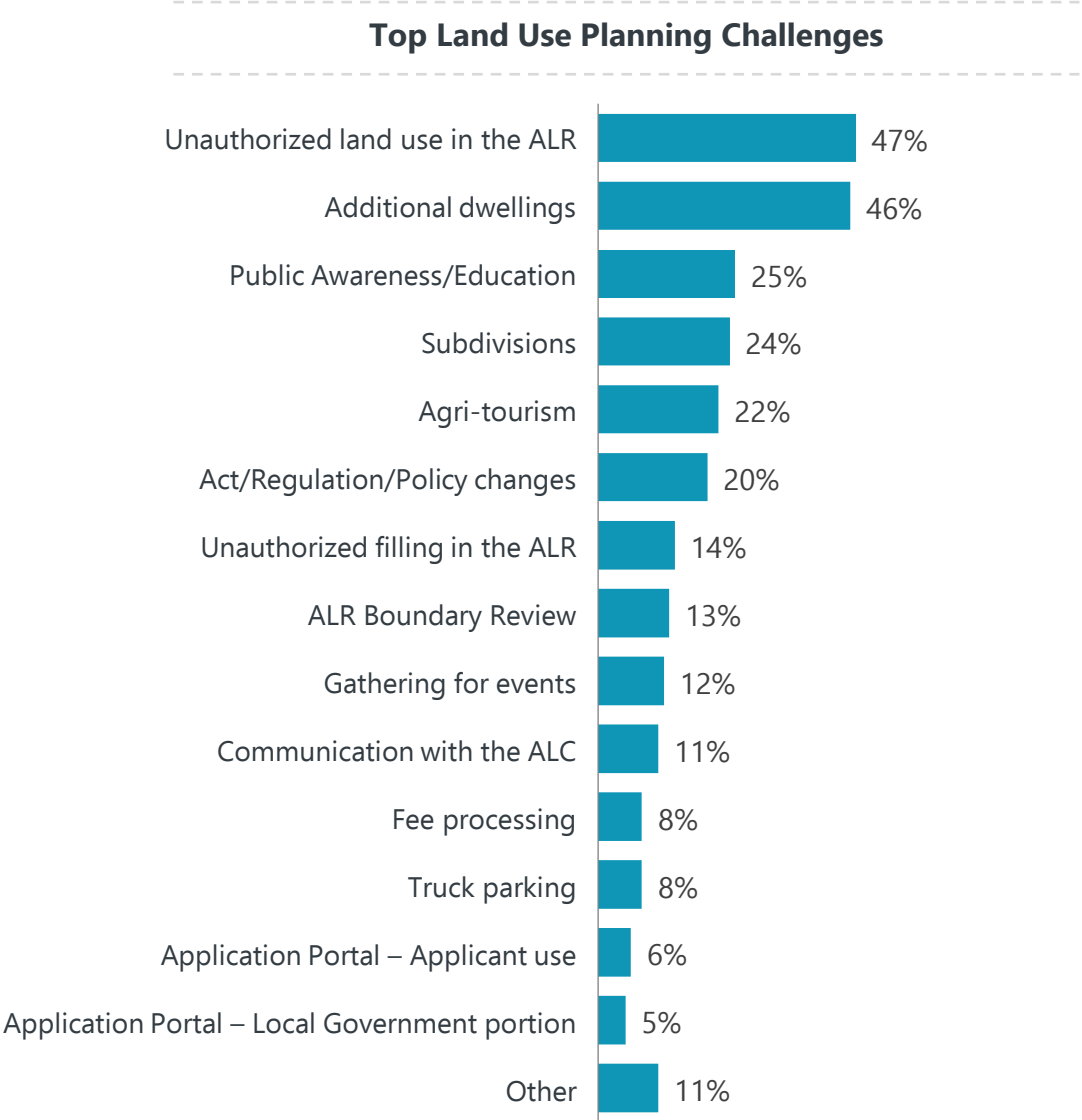


Note: percentages may add to more than 100% given that it is a multiple response question.
Q15. Would you find any of the following useful?
Q15AA. How often would you like to have in-person meetings with ALC representatives?

Top Land Use Planning Challenges



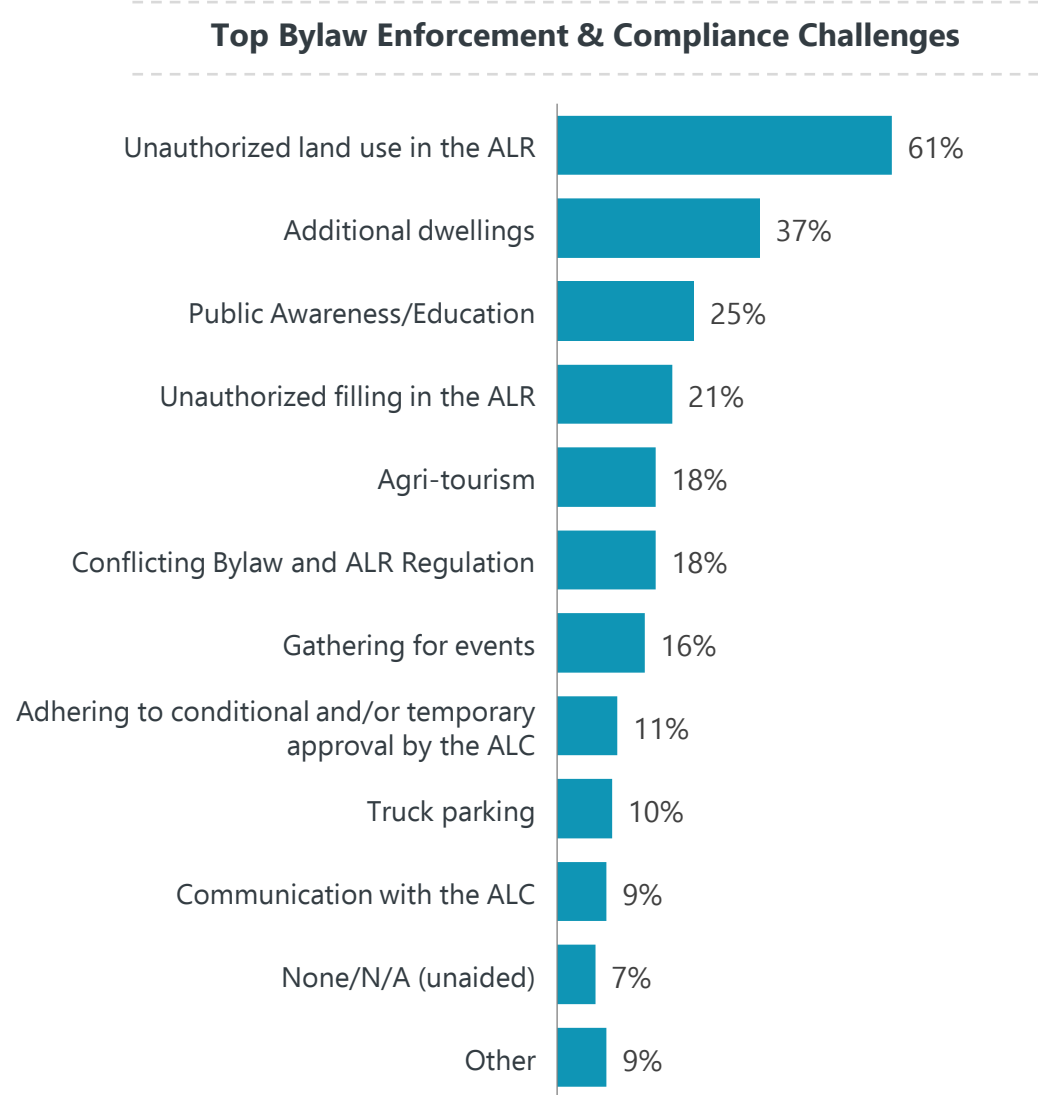
- › By a wide margin, the top land use planning challenges are unauthorized land use in the ALR and additional dwellings – just under half of stakeholders selected them among their top three challenges.
- › Following distantly, the next most common challenges are public awareness/education, subdivisions, agri-tourism and Act/Regulation policy changes (selected by between 20-25% of stakeholders).
- › From a regional perspective, stakeholders on the Island are most likely to consider additional dwellings as a challenge (65% compared to 46% overall), while those in the South Coast are particularly challenged by unauthorized filling in the ALR (32% compared to 14% overall).



Base: (251)
Note: percentages may add to more than 100% given that it is a multiple response question.
Q16. In your role, what are the top three challenges in relation to land use planning in the ALR? *Select up to 3 challenges.*

Top Bylaw Enforcement & Compliance Challenges

- › When it comes to bylaw enforcement and compliance, unauthorized land use in the ALR continues to be the main challenge (61% selecting it as one of their top three challenges).
- › Additional dwellings are also a challenge with over one-third of stakeholders selecting it within their top three.
- › Public awareness/education and unauthorized filling are the next most common challenges related to bylaw compliance and enforcement (selected by 25% and 21%, respectively).

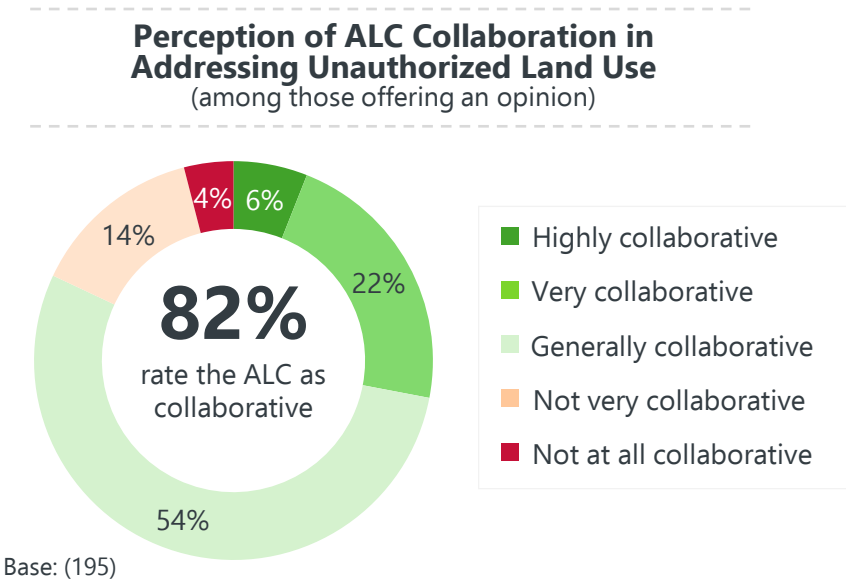


Base: (251)
Note: percentages may add to more than 100% given that it is a multiple response question.
Q18. In your role, what are the top three challenges in relation to bylaw compliance and enforcement in the ALR? *Select up to 3 challenges.*

ALC Collaboration Regarding Unauthorized Land Use



- › Among stakeholders who were able to provide an assessment, 8-in-10 stakeholders rate the current relationship between their local government and the ALC as collaborative.
- › One of the main comments that participants shared regarding the collaboration on enforcement is that they desire more involvement from the ALC in this area. Others feel that the collaboration is good and compliment ALC staff on being helpful and supportive.



Comments on Collaboration with the ALC on Enforcement

“ I understand from our Bylaw Enforcement Department that the ALC’s enforcement department is very understaffed and so it’s difficult to have anyone come out to our area for enforcement. ”

“ I think much of it is left to the municipality to enforce. There should be more direct involvement of the ALC in this area. ”

“ In the past 5 years, until recently, I have been aware of one instance where the ALC did enforcement action here. So we really need the ALC enforcement staff to have a bigger presence here, so we can support each other. The bylaw staff here have a very good handle on this, but it all cannot fall on the city’s staff to do all the enforcement. ALC needs to work with us. ”

“ Planning departments are very collaborative, however on-the-ground enforcement is not there. ”

“ To date we have enjoyed fantastic support and prompt attention to our enquiries from all ALC staff. ”

“ Good communication with ALC staff. Helpful in addressing questions. ”

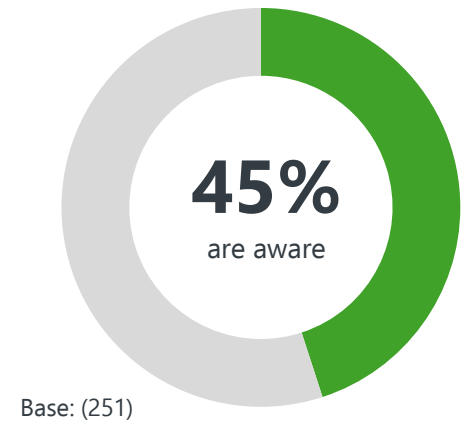
Q20A. When it comes to addressing unauthorized land use in the ALR, how would you describe the current relationship between your local government and the ALC?

Q20B. Do you have any comments regarding collaboration with the ALC on enforcement?

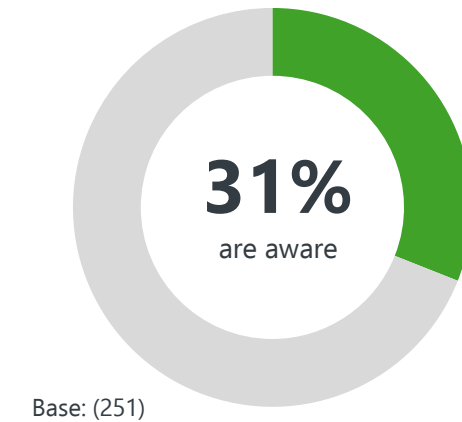
Awareness of Downloads from ALC Website

- › Forty-five percent of stakeholders are aware that the ALR Boundary and ALR Zone 1 & 2 are downloadable from the ALC website as a GIS shapefile or Google Earth kmz file.
- › Awareness is higher among those who work in land use planning/policy – 58% are aware that the downloads are available.
- › Just under one-third of stakeholders are aware that Agricultural Capability data is available for download on the ALC website as a GIS geodatabase.
- › Again, awareness is higher among those who work in land use planning/policy (38% are aware).

Awareness that ALR Boundary and ALR Zone 1 & 2 can be downloaded from the ALC website



Awareness that Agricultural Capability data can be downloaded from the ALC website



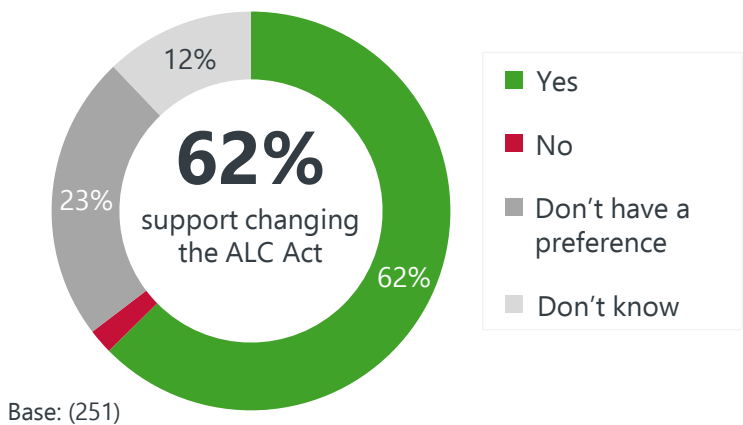
Q21. Are you aware that that the ALR Boundary and ALR Zone 1 & 2 are available for download from the ALC website as a GIS shapefile or Google Earth kmz file? This information is also available for download through the B.C. Data Catalogue.

Q22. Are you aware that Agricultural Capability data is available for download from the ALC website as a GIS geodatabase to be used with GIS software?

Support for Allowing the ALC to Collect Application Fee Directly

- > Six-in-ten stakeholders would support changes to the ALC Act that would allow the ALC to collect its own portion of the application fee directly. Another quarter say that they don't have a preference either way, while 12% are unsure.
- > Only 2% of stakeholders express that they are against revising the ALC Act for this purpose.

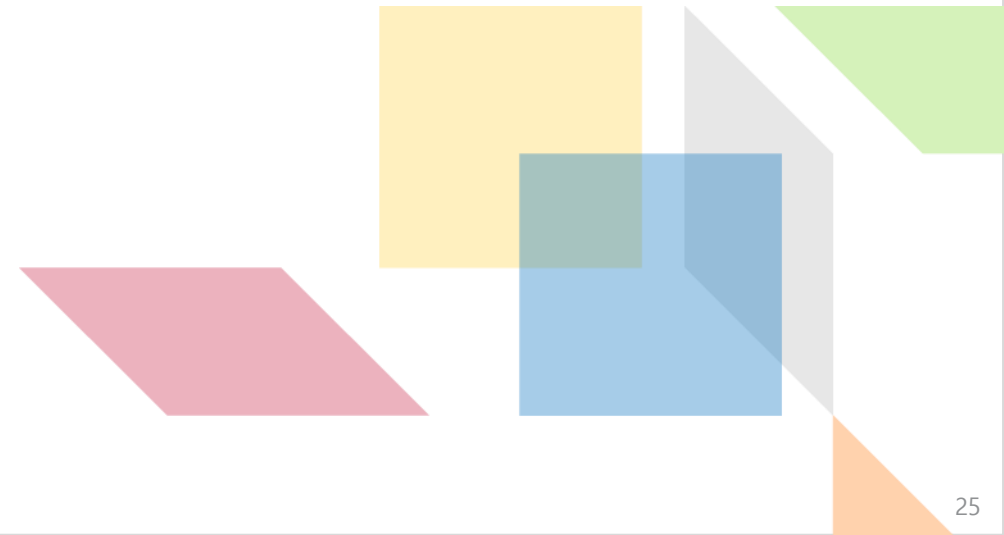
Support for Changing ALC Act to Allow the ALC to Collect its Application Fee Directly



A small graphic element for the 'Appendix' title, consisting of a green and grey 3D cube icon.

Appendix

- Participant Profile
- Questionnaire



Participant Profile



	2016
Base	251
	%
Government Type	
Municipality	64
Regional District	29
Island's Trust (unaided)	5
Other	2
Region	
Interior	7
Island	24
Kootenay	10
North	8
Okanagan	19
South Coast	32
Role/Area of Work	
Land Use Planning/Policy	59
Administration	12
Bylaw Enforcement	9
Elected Official	8
Engineering/Building/Permitting	6
Finance	2
Other	3

AGRICULTURAL LAND COMMISSION SURVEY OF LOCAL GOVERNMENT **FINAL**

SURVEY LANDING PAGE

Thank you for taking the time to provide us with your feedback which will help the Agricultural Land Commission (ALC) ensure that its services and staff can best assist you with matters relating to regulation and enforcement in the Agricultural Land Reserve (ALR). All of your feedback is strictly confidential and will not be linked to your identity.

PARTICIPANT CHARACTERISTICS

Q1. Please indicate if you work for a municipality, regional district, or first nations government.

1. Municipality
2. Regional District
3. First Nations Government
96. Other (please specify)

Q2. Which ALR Region is your local government in?

1. Interior
2. Island
3. Kootenay
4. North
5. Okanagan
6. South Coast

Q3. And which of the following best describes your role, or the area you work in?

If it is not listed below, you can enter it in using 'Other (please specify)'.

1. Administration
2. Bylaw Enforcement
3. Elected Official
4. Engineering/Building/Permitting
5. Finance
6. Land Use Planning/Policy
96. Other (please specify)

AWARENESS, COMMUNICATIONS

Q4. How do you typically learn about changes or matters related to Agricultural Land Reserve (ALR) land use policy, planning, or enforcement (e.g., changes to the application process, the *ALC Act*, *ALR Regulations*)?

Please select all that apply and/or enter a response in 'Other (please specify)'.

1. ALC staff
2. ALC website
3. ALC Information Update email
4. Co-workers

5. Local government/Municipal/Regional District website
6. Ministry of Agriculture/BC Government press releases
7. News media – i.e., newspaper, radio, television, online
8. Staff working in the Ministry of Agriculture/BC Government
9. The public – including landowners, applicants
96. Other (please specify)

Q5 INTRO. ALC Policies provide interpretation & clarification of the *ALC Act & ALR Regulation*. ALC Policies outline guidelines, strategies, rules and positions on various issues and provide clarification and courses of action consistently taken or adopted by the Commission.

Q5A. Before this survey, were you aware that the ALC adopts various Land Use, Procedural and Operational Policies?

1. Yes
2. No | SKIP TO Q6

Q5B. How often do you refer to these ALC Policies?

1. Very often
2. Somewhat often
3. Not very often
4. Rarely or never | SKIP TO Q6
98. Don't know/Not sure | SKIP TO Q6

Q5C. How helpful do you generally find these ALC Policies in carrying out your role?

1. Very helpful
2. Somewhat helpful
3. Not very helpful
4. Not at all helpful
98. Don't know/Not sure

Q5D. [SHOW ON SAME PAGE AS Q5C] Could the ALC Policies be modified to be more helpful to you in your role? If so, how?

RECORD VERBATIM

Q6. Does your local government refer all ALR applications to your Agricultural Advisory Commission (AAC)?

1. Yes
2. No
3. Referring applications is optional
98. Don't know
99. We do not have an AAC

Q7. Does your local government have a soil deposit/extraction bylaw?

- 1. Yes
- 2. No
- 98. Don't know/Not sure

Q8. Does your local government issue building permits on parcels in the ALR?

- 1. Yes
- 2. No | SKIP TO Q10
- 98. Don't know | SKIP TO Q10
- 99. Not applicable | SKIP TO Q10

Q9A. [ASK ONLY IF Q8=YES] Does the review process for building permits include a review of ALC Policies, the *ALC Act & ALR Regulation*?

- 1. Yes | SKIP TO Q10
- 2. No
- 98. Don't know | SKIP TO Q10

Q9B. [ASK ONLY IF Q9=NO. SHOW ON SAME PAGE AT Q9] Is there a specific reason(s) why the review process for building permits does not include a review of ALC Policies, the *ALC Act & ALR Regulation*?
RECORD VERBATIM

INTERACTION WITH ALC

Q10. In the past 6 months, how often have you contacted someone at the ALC for each of the following reasons?

RANDOMIZE

Q10A. For ALC Application Portal assistance

Q10B. To discuss an ALR application

Q10C. Before issuing a building permit in the ALR

Q10D. For assistance with *ALC Act/ALR Regulation*/ALC Policy interpretation

Q10E. To discuss a proposed land use inquiry by an ALR Landowner

Q10F. For information regarding the ALC compliance and enforcement process

Q10G. To submit a report of possible unauthorized use on ALR land

- 1. Once
- 2. 2 to 5 times
- 3. 6 to 10 times
- 4. 11 to 20 times
- 5. 21 to 50 times
- 6. More than 50 times
- 97. Did not contact the ALC for this

Q11A. Thinking about the last time you contacted the ALC, did you first attempt to use the ALC website before you contacted ALC staff?

1. Yes. I found the answer, but I required official ALC confirmation/documentation | SKIP TO Q12
2. Yes, but I didn't find the information I needed | SKIP TO Q11B
3. Yes, but my inquiry was very site/case specific | SKIP TO Q12
4. No, I did not use the ALC website | SKIP TO Q11C

Q11B. [ASK ONLY IF Q11A=2. SHOW ON SAME PAGE AS Q11A] What information were you looking for that you couldn't find?

RECORD VERBATIM

Q11C. [ASK ONLY IF Q11A=4. SHOW ON SAME PAGE AS Q11A] Why did you not attempt to use the website?

RECORD VERBATIM

Q12 INTRO. *Please be advised that the ALC will also be conducting a targeted ALC Application Portal User Experience survey in Feb/Mar 2017.*

Q12. Have you used the ALC Application Portal in the past 6 months?

1. Yes
2. No
98. Don't know/Not sure

Q13A. How helpful has 'Application Portal Update' email communication from the ALC been?

1. Very helpful
2. Somewhat helpful
3. Neither helpful or unhelpful
4. Not very helpful
5. Not at all helpful
98. Don't know/Not sure

Q13B. [SHOW ON SAME PAGE AS Q13A] Do you have any comments to add about the Application Portal Update email communication?

RECORD VERBATIM

Q14. How would you prefer to receive information about the ALR from the ALC? Select as many as apply.

RANDOMIZE

1. In person meetings/presentations
2. ALC website
3. Email
4. E-newsletter (subscribed)
5. Fact sheets

6. Media releases
7. Webinars
8. Social media
96. Other (please specify)

Q15 INTRO. Would you find any of the following useful?

Q15A. In-person meeting with ALC representatives.

Q15B. Webinars hosted by ALC representatives on Act/Regulation changes, ALC process instructions, etc.

Q15C. ALR focussed training course for Approving Officers.

Q15D. Land Use Planner education sessions.

1. Yes
2. No
98. Don't know/Not sure

Q15AA. [ASK ONLY IF Q15A=YES. SHOW ON SAME PAGE AS Q15A] How often would you like to have in-person meetings with ALC representatives?

1. Once a year
2. Every six months
3. After major changes to the ALC ACT & ALR Regulation
96. Other (please specify)

Q15E. What other types of interaction and/or ALC related topics would you find useful?

RECORD VERBATIM

PRIORITIES, HOW ALC CAN HELP AND ATTITUDES TOWARD POLICY CHANGES

Q16. In your role, what are the top three challenges in relation to **land use planning in the ALR**?

[RESPONDENT MUST SELECT BETWEEN 1 AND 3 OPTIONS]

RANDOMIZE

1. Act/Regulation/Policy changes
2. Fee processing
3. Communication with the ALC
4. Unauthorized land use in the ALR
5. Unauthorized filling in the ALR
6. Agri-tourism
7. Truck parking
8. Gathering for events
9. Additional dwellings
10. Subdivisions
11. ALR Boundary Review
12. Application Portal – Local Government portion

- 13. Application Portal – Applicant use
- 14. Public Awareness/Education
- 96. Other (please specify)

Q17A. [IF SELECTED 1 OPTION] And why is that your top land use planning challenge?

[IF SELECTED 2 or 3 OPTIONS] And why are those your top land use planning challenges?

RECORD VERBATIM

Q17B. Do you have any suggestions that would help you address your land use challenge(s)?

RECORD VERBATIM

Q18. In your role, what are the top three challenges in relation to **bylaw compliance and enforcement in the ALR**?

[RESPONDENT MUST SELECT BETWEEN 1 AND 3 OPTIONS]

RANDOMIZE

- 1. Communication with the ALC
- 2. Conflicting Bylaw and ALR Regulation
- 3. Adhering to conditional and/or temporary approval by the ALC
- 4. Unauthorized land use in the ALR
- 5. Unauthorized filling in the ALR
- 6. Agri-tourism
- 7. Truck parking
- 8. Gathering for events
- 9. Additional dwellings
- 10. Public Awareness/Education
- 96. Other (please specify)

Q19A. [IF SELECTED 1 OPTION] And why is that your top bylaw compliance and enforcement challenge?

[IF SELECTED 2 or 3 OPTIONS] And why are those your top bylaw compliance and enforcement challenges?

RECORD VERBATIM

Q19B. Do you have any suggestions that would help you address your bylaw compliance and enforcement challenge(s)?

RECORD VERBATIM

Q20A. When it comes to addressing unauthorized land use in the ALR, how would you describe the current relationship between your local government and the ALC?

- 1. Highly collaborative
- 2. Very collaborative
- 3. Generally collaborative
- 4. Not very collaborative
- 5. Not at all collaborative
- 98. Don't know/Not sure

Q20B. [SHOW ON SAME PAGE AS Q20A] Do you have any comments regarding collaboration with the ALC on enforcement?

RECORD VERBATIM

Q21. Are you aware that that the ALR Boundary and ALR Zone 1 & 2 are available for download from the ALC website as a GIS shapefile or Google Earth kmz file? This information is also available for download through the B.C. Data Catalogue.

1. Yes
2. No

Q22. Are you aware that Agricultural Capability data is available for download from the ALC website as a GIS geodatabase to be used with GIS software?

1. Yes
2. No

Q23. Section 35 of the *ALC Act* legislates that a local government receives application fees and must remit the ALC portion at the appropriate time.

Would you support changes to the *ALC Act* that would allow the ALC to collect the ALC's portion of the application fee directly?

1. Yes
2. No
3. Don't have a preference
98. I don't know

Those are all of our questions.

On behalf of the ALC, thank you again for your time and feedback.