



Agricultural Land Commission
133-4940 Canada Way
Burnaby, British Columbia V5G 4K6
Tel: 604 660-7000
Fax: 604 660-7033
www.alc.gov.bc.ca

January 30, 2013

ALC File: # 53042
PGL File: 2296-01.01

Pottinger Gaherty Environmental Consultants Ltd.
#1200, 1185 West Georgia Street
VANCOUVER BC V6E 4E6

Attention: Ned Pottinger

Re: Application for Transportation Use within the Agricultural Land Reserve (ALR)

Please find attached the Minutes of Resolution # 17/2013 as it relates to the above noted application. As agent, it is your responsibility to notify your client accordingly.

As you are aware, the Corporation of Delta withdrew from the application the one parcel which it owns. For that reason, thus this decision does not apply to that parcel. A separate application will be required at such time as any part of that parcel is proposed for dedication and construction of road works.

Further correspondence with respect to this application is to be directed to Tony Pellett.

Yours truly,

PROVINCIAL AGRICULTURAL LAND COMMISSION

Per:

A handwritten signature in black ink, appearing to read 'B. Underhill', is written over a light blue horizontal line. The signature is fluid and cursive.

Brian Underhill, Executive Director

Enclosure: Minutes of Resolution #17/2013
Road layout plan

cc: Corporation of Delta

TP/
53042d1



MINUTES OF THE PROVINCIAL AGRICULTURAL LAND COMMISSION

A meeting was held by the Provincial Agricultural Land Commission on January 24, 2013 at the offices of the Commission located at #133 – 4940 Canada Way, Burnaby, B.C. as it relates to Application #53042.

COMMISSION MEMBERS PRESENT:

Richard Bullock	Chair
Jennifer Dyson	Vice-Chair
Gordon Gillette	Vice-Chair
Sylvia Pranger	Vice-Chair
Bert Miles	Commissioner
Jim Johnson	Commissioner
Jerry Thibeault	Commissioner
Lucille Dempsey	Commissioner
Denise Dowswell	Commissioner

COMMISSION STAFF PRESENT:

Tony Pellett	Regional Planner
Lindsay McCoubrey	Land Use Planner
Eamonn Watson	Land Use Planner
Brian Underhill	Executive Director
Colin Fry	Executive Director

PROPOSAL

Establish new transportation routes servicing Tsawwassen Lands.

(Submitted pursuant to section 6 of BC Regulation #171/2002 (*ALR Use, Subdivision and Procedure Regulation*))

LEGISLATIVE CONTEXT FOR COMMISSION CONSIDERATION

Section 6 (Purposes of the commission) of the *Agricultural Land Commission Act* states:

- 6 The following are the purposes of the commission:
 - (a) to preserve agricultural land;
 - (b) to encourage farming on agricultural land in collaboration with other communities of interest; and
 - (c) to encourage local governments, first nations, the government and its agents to enable and accommodate farm use of agricultural land and uses compatible with agriculture in their plans, bylaws and policies.

COMMISSION CONSIDERATION

After considering the information the Commission concluded as follows:

1. Protection of existing drainage infrastructure

Conclusion: The creation of a parcel to protect the 48 Street drainage way and the location of road alignments with priority to protecting drainage ways are highly appropriate.

2. Location and configuration of proposed new roads

Conclusion: Given the need to limit commercial or industrial traffic in the agricultural areas of Delta, the location and configuration of the proposed roads makes good sense.

IT WAS

MOVED BY: Commissioner Jerry Thibeault

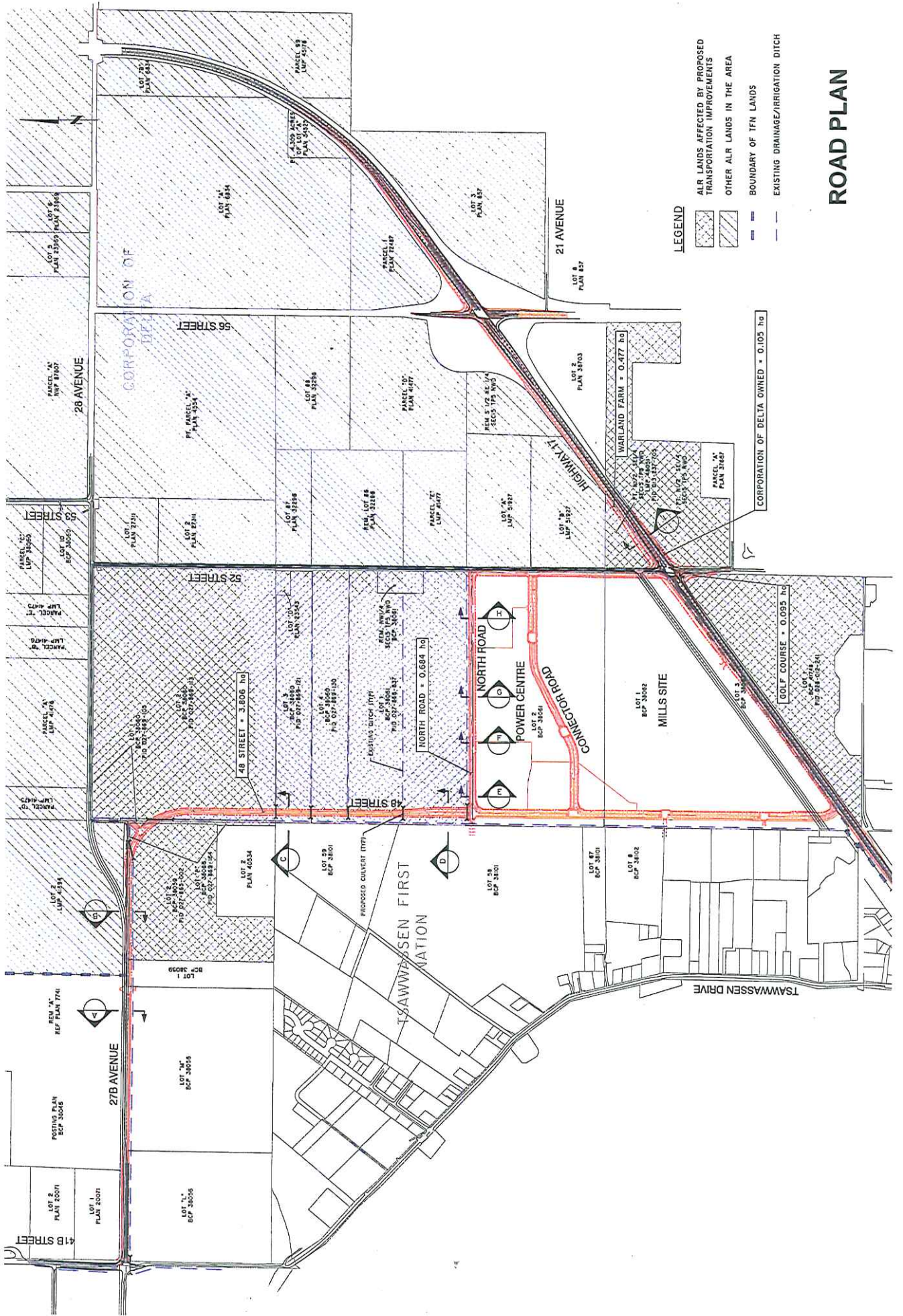
SECONDED BY: Commissioner Bert Miles

THAT the proposal by the Tsawwassen First Nation treaty first nation government to dedicate and construct new roads while protecting drainage courses within the Tsawwassen Lands and within the Corporation of Delta be approved as submitted

AND THAT this decision does not relieve the Tsawwassen First Nation of the responsibility to comply with applicable Acts, regulations, Corporation of Delta bylaws, and decisions and orders of any person or body having jurisdiction over the land under an enactment.

CARRIED

Resolution #17/2013



LEGEND

- ALR LANDS AFFECTED BY PROPOSED TRANSPORTATION IMPROVEMENTS
- OTHER ALR LANDS IN THE AREA
- BOUNDARY OF TFN LANDS
- EXISTING DRAINAGE/IRRIGATION DITCH

ROAD PLAN

CORPORATION OF DELTA OWNED * 0.105 ha

GOLF COURSE * 0.095 ha

WARLAND FARM * 0.477 ha

NORTH ROAD = 0.684 ha

48 STREET = 3.806 ha

27B AVENUE

POSTING PLAN

REF PLAN 22001

LOT 2 PLAN 22001

LOT 1 PLAN 22001

41B STREET

LOT 1 PLAN 22001

LOT 2 PLAN 22001

LOT 3 PLAN 22001

LOT 4 PLAN 22001

LOT 5 PLAN 22001

LOT 6 PLAN 22001

LOT 7 PLAN 22001

LOT 8 PLAN 22001

LOT 9 PLAN 22001

LOT 10 PLAN 22001

LOT 11 PLAN 22001

LOT 12 PLAN 22001

LOT 13 PLAN 22001

LOT 14 PLAN 22001

LOT 15 PLAN 22001

LOT 16 PLAN 22001

LOT 17 PLAN 22001

LOT 18 PLAN 22001

LOT 19 PLAN 22001

LOT 20 PLAN 22001

LOT 21 PLAN 22001

LOT 22 PLAN 22001

LOT 23 PLAN 22001

LOT 24 PLAN 22001

LOT 25 PLAN 22001

LOT 26 PLAN 22001

LOT 27 PLAN 22001

LOT 28 PLAN 22001

LOT 29 PLAN 22001

LOT 30 PLAN 22001

LOT 31 PLAN 22001

LOT 32 PLAN 22001

LOT 33 PLAN 22001

LOT 34 PLAN 22001

LOT 35 PLAN 22001

LOT 36 PLAN 22001

LOT 37 PLAN 22001

LOT 38 PLAN 22001

LOT 39 PLAN 22001

LOT 40 PLAN 22001

LOT 41 PLAN 22001

LOT 42 PLAN 22001

LOT 43 PLAN 22001

LOT 44 PLAN 22001

LOT 45 PLAN 22001

LOT 46 PLAN 22001

LOT 47 PLAN 22001

LOT 48 PLAN 22001

LOT 49 PLAN 22001

LOT 50 PLAN 22001

LOT 51 PLAN 22001

LOT 52 PLAN 22001

LOT 53 PLAN 22001

LOT 54 PLAN 22001

LOT 55 PLAN 22001

LOT 56 PLAN 22001

LOT 57 PLAN 22001

LOT 58 PLAN 22001

LOT 59 PLAN 22001

LOT 60 PLAN 22001

LOT 61 PLAN 22001

LOT 62 PLAN 22001

LOT 63 PLAN 22001

LOT 64 PLAN 22001

LOT 65 PLAN 22001

LOT 66 PLAN 22001

LOT 67 PLAN 22001

LOT 68 PLAN 22001

LOT 69 PLAN 22001

LOT 70 PLAN 22001

LOT 71 PLAN 22001

LOT 72 PLAN 22001

LOT 73 PLAN 22001

LOT 74 PLAN 22001

LOT 75 PLAN 22001

LOT 76 PLAN 22001

LOT 77 PLAN 22001

LOT 78 PLAN 22001

LOT 79 PLAN 22001

LOT 80 PLAN 22001

LOT 81 PLAN 22001

LOT 82 PLAN 22001

LOT 83 PLAN 22001

LOT 84 PLAN 22001

LOT 85 PLAN 22001

LOT 86 PLAN 22001

LOT 87 PLAN 22001

LOT 88 PLAN 22001

LOT 89 PLAN 22001

LOT 90 PLAN 22001

LOT 91 PLAN 22001

LOT 92 PLAN 22001

LOT 93 PLAN 22001

LOT 94 PLAN 22001

LOT 95 PLAN 22001

LOT 96 PLAN 22001

LOT 97 PLAN 22001

LOT 98 PLAN 22001

LOT 99 PLAN 22001

LOT 100 PLAN 22001