



**Agricultural Land Commission**  
133-4940 Canada Way  
Burnaby, British Columbia V5G 4K6  
Tel: 604 660-7000  
Fax: 604 660-7033  
www.alc.gov.bc.ca

September 22, 2009

Reply to the attention of Simone Rivers  
ALC File: 50300

HBH Land Surveying Inc.  
PO Box 536  
Smithers BC V0J 2N0

Dear Sir/Madam:

**Re: Application for Transportation Corridor use in the Agricultural Land Reserve**

Please find attached the Minutes of Resolution # 762/2009 outlining the Commission's decision as it relates to the above noted application. As agent, it is your responsibility to notify your client(s) accordingly.

Please send two (2) paper prints of the final survey plans to this office. When the Commission confirms that all conditions have been met, it will authorize the Registrar of Land Titles to accept registration of the plan.

Other approvals may be necessary. Prior to proceeding, the Commission suggests you contact your Local Government.

Yours truly,

PROVINCIAL AGRICULTURAL LAND COMMISSION

Per: 

Erik Karlsen, Chair

Enclosure: Minutes/Sketch Plan

cc: Regional District of Bulkley-Nechako

SBR/  
50300d1





This decision does not relieve the owner or occupier of the responsibility to comply with applicable Acts, regulations, bylaws of the local government. This includes zoning, subdivision, or other land use bylaws, and decisions of any authorities that have jurisdiction under an enactment.

**CARRIED**  
**Resolution # 762/2009**

# Provincial Agricultural Land Commission

Application # 50300  
Resolution # 762/2009

-  Subject Property
-  Approved road dedication (20 m)

REFERENCE PLAN OF ROAD  
OVER PART OF BLOCK A OF DISTRICT LOTS 1090 AND 1097,  
RANGE 5, COAST DISTRICT.  
Pursuant to Section 107 1(e) of the Land Title Act

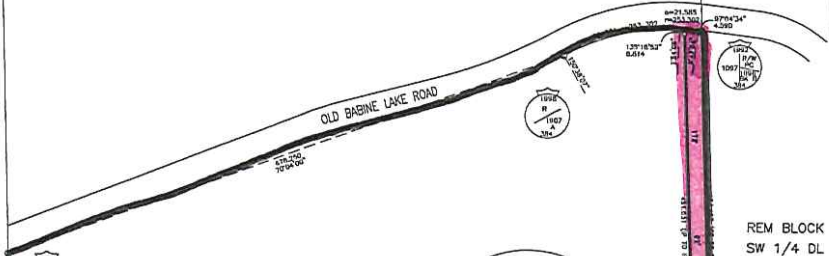
BCGS 93L086

THE INTENDED PLOT SIZE OF THIS PLAN IS 500mm IN WIDTH BY  
300mm IN HEIGHT (3:20) MEAS PLOTTED AT A SCALE OF 1:2000  
0 50 100 150 200 250  
ALL DISTANCES ARE IN METRES EXCEPT AS NOTED  
S.T. BEARINGS ARE MAGNETIC

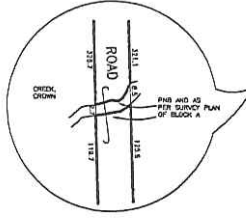
SW 1/4 DL 1097

REM SE 1/4 DL 1097

BLOCK A



- LEGEND:
- STAKED IRON POST FOUND
  - STAKED IRON POST PLACED
  - ⊙ STAKED CAPPED POST FOUND



REM BLOCK B  
SW 1/4 DL 1096  
PLAN PRP45611

OPEN  
0.5m DEEP 2.5m WIDE  
ON SLEEVE  
NO RTX AVAILABLE

LOT 1  
PLAN EPP55

REM  
BLOCK A DL 1090 AND DL 1097

LOT 2  
PLAN BCP23858

SW 1/4 DL 1091

NW 1/4 DL 1090

SW 1/4  
DL 1090

Fig B7a, plat mass  
22m BALSAM 2.0 2.0 20V  
20m BRUSH 1.0 1.0 12'  
NO OTHER RTX AVAILABLE

SE 1/4 DL 1090

AT CP226  
Datum: NAD 83 (CP26), 17M, Zone 9  
UTM Northing: 5394333  
UTM Easting: 439294A  
Canadian Feature: 9999999  
Estimated Network Horizontal Accuracy is 0.1 metres



The UTM coordinates and extended network horizontal accuracy are derived from  
static and frequency GPS measurements processed with National Resources Canada's  
Proven Post Processing (PPP) service.

The extended network horizontal accuracy is 0.16 metres at the  
95% confidence level.

Readings were NAD 83 (CGRS) grid bearings derived from differential carrier phase  
GPS observations and are referred to the central meridian of Zone 9 (120° West  
Longitude). To obtain local magnetic bearings referred to the magnetic meridian  
CP226, see the convergence diagram.

This plan shows horizontal ground line distances, based on a mean ellipsoidal  
height of 800 metres. To compute and determine, multiply ground line  
distances by the mean combined factor of 0.99997.

Fig B7b, plat mass  
From BLOCK A DL 1097  
shown SURVEY 9, 1:1 17V  
NO OTHER RTX AVAILABLE

The field survey represented by this plan was completed by  
Stephen P.H. Roberts, B.C.L.S., on the 3rd Day of September, 2008.  
THIS PLAN LIES WITHIN THE BULKLEY-NECHASO REDUCTION DISTRICT

STEPHEN HOWARD B.C.L.S.  
2003 3rd FLOOR  
1075 GLENDEN BLDG. 100 2ND  
FLOOR S.W. EDMONTON, ALBERTA  
T6C 0G6  
PH/FAX: 1-506-647-3600