



**Agricultural Land Commission**  
133-4940 Canada Way  
Burnaby, British Columbia V5G 4K6  
Tel: 604 660-7000  
Fax: 604 660-7033  
www.alc.gov.bc.ca

Reply to the attention of Terra Kaethler  
ALC File: J-37639

December 7, 2007

Island Ice Ltd  
748 Market Street  
Victoria, BC V8T5K5

Dear Sir:

**Re: Application to Subdivide land in the Agricultural Land Reserve**

Please find attached the Minutes of Resolution # 555/2007 outlining the Commission's decision as it relates to the above noted application.

Please send two (2) paper prints of the final survey plans to this office. When the Commission confirms that all conditions have been met, it will authorize the Registrar of Land Titles to accept registration of the plan.

Yours truly,

PROVINCIAL AGRICULTURAL LAND COMMISSION

Per: 

Erik Karlsen, Chair

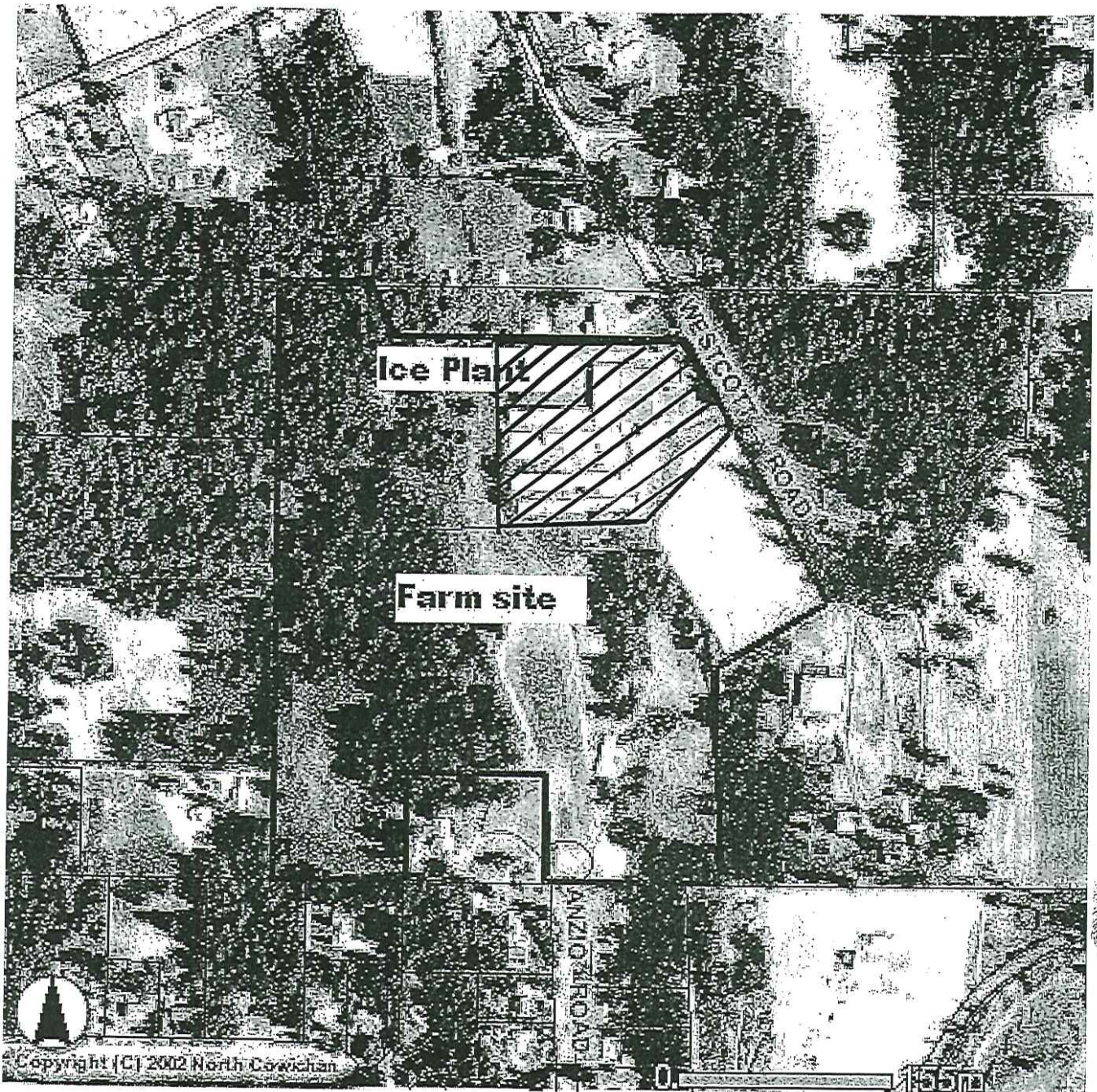
cc: The Corporation of the District of North Cowichan (3025-20-07-02)

Enclosure: Minutes/Sketch Plan

TK/37639d1.doc







**Provincial Agricultural Land Commission**  
Application # 37639  
Resolution #555/2007

-  Subject Property
-  Approved Subdivision of 2.0 ha