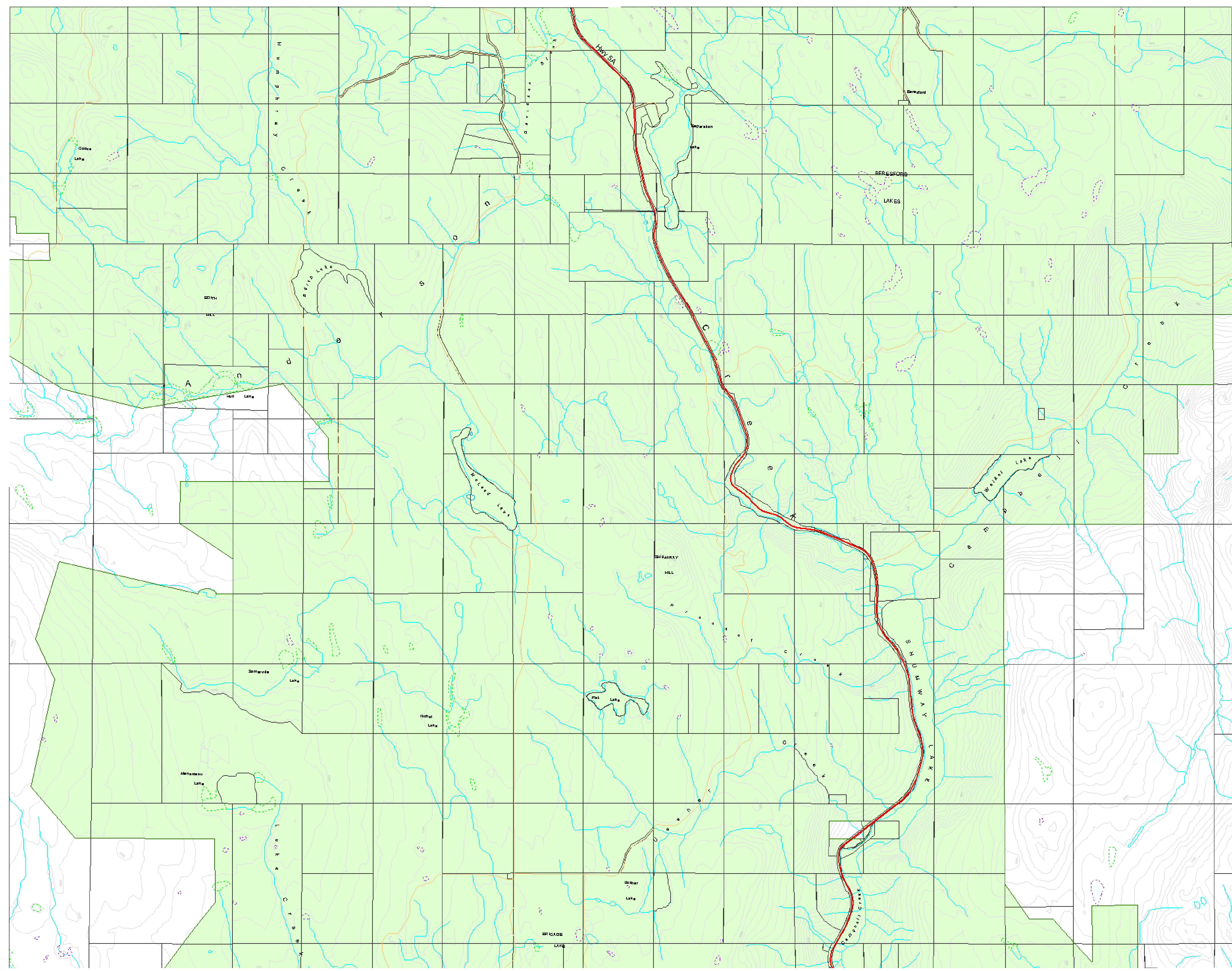
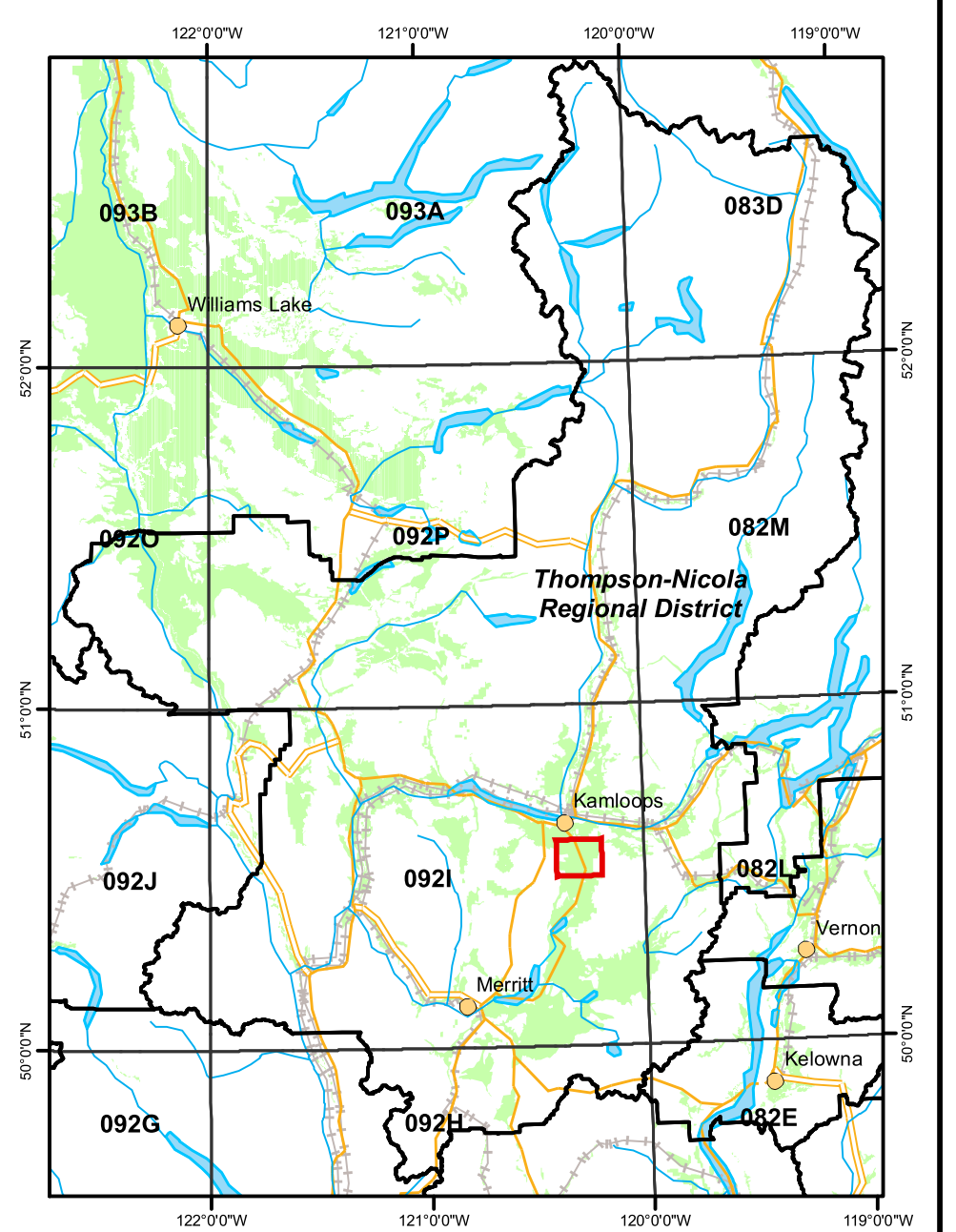


Map Amendment History as of 2007	
Date	Application
Jan-08	02-ZZ-EAZZ-2001-34002



Map Location



921.058
921.058
921.048

921.070
921.060
921.050

921.069

921.049



Agricultural Land Commission
133-4940 Canada Way,
Burnaby B.C. V5G 4K6
Phone: (604) 660-7000
Fax: (604) 660-7033
ALC Website: www.alc.gov.bc.ca

This map represents Agricultural Land Reserve lands within the Thompson-Nicola Regional District, designated by Resolution #596/2006 of the Agricultural Land Commission.

Map amendment period: January 31, 2008

Map compiled by the Geographic Information Systems Department, Agricultural Land Commission.

Base Mapping Sources:
Mapping control: B.C. Government
Planimetric: TRIM
Cadastral: Integrated Cadastre Initiative

The Agricultural Land Commission assumes no liability for the accuracy of the base mapping information.

- Agricultural Land Reserve
- Property Boundaries
- Regional District Boundaries
- Indian Reserves
- Municipal Boundaries

Contour Interval 20 metres
B.C. Albers Projection
NAD 83

REGIONAL DISTRICT
Thompson-Nicola
SCALE: 1 : 20 000
0 200 400 600 800 1,000
Meters

B.C.G.S. MAP REFERENCE NUMBER:
921.059