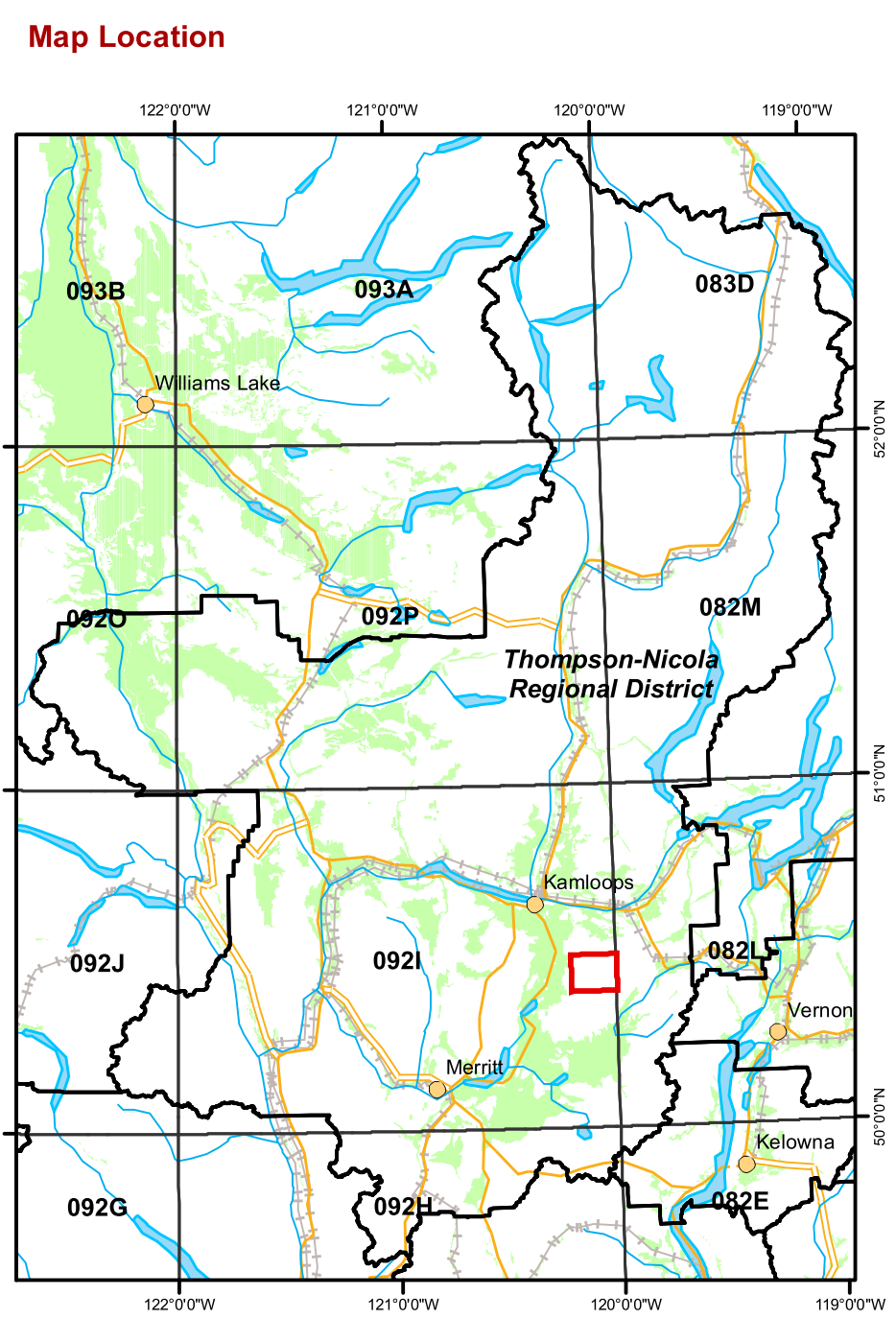
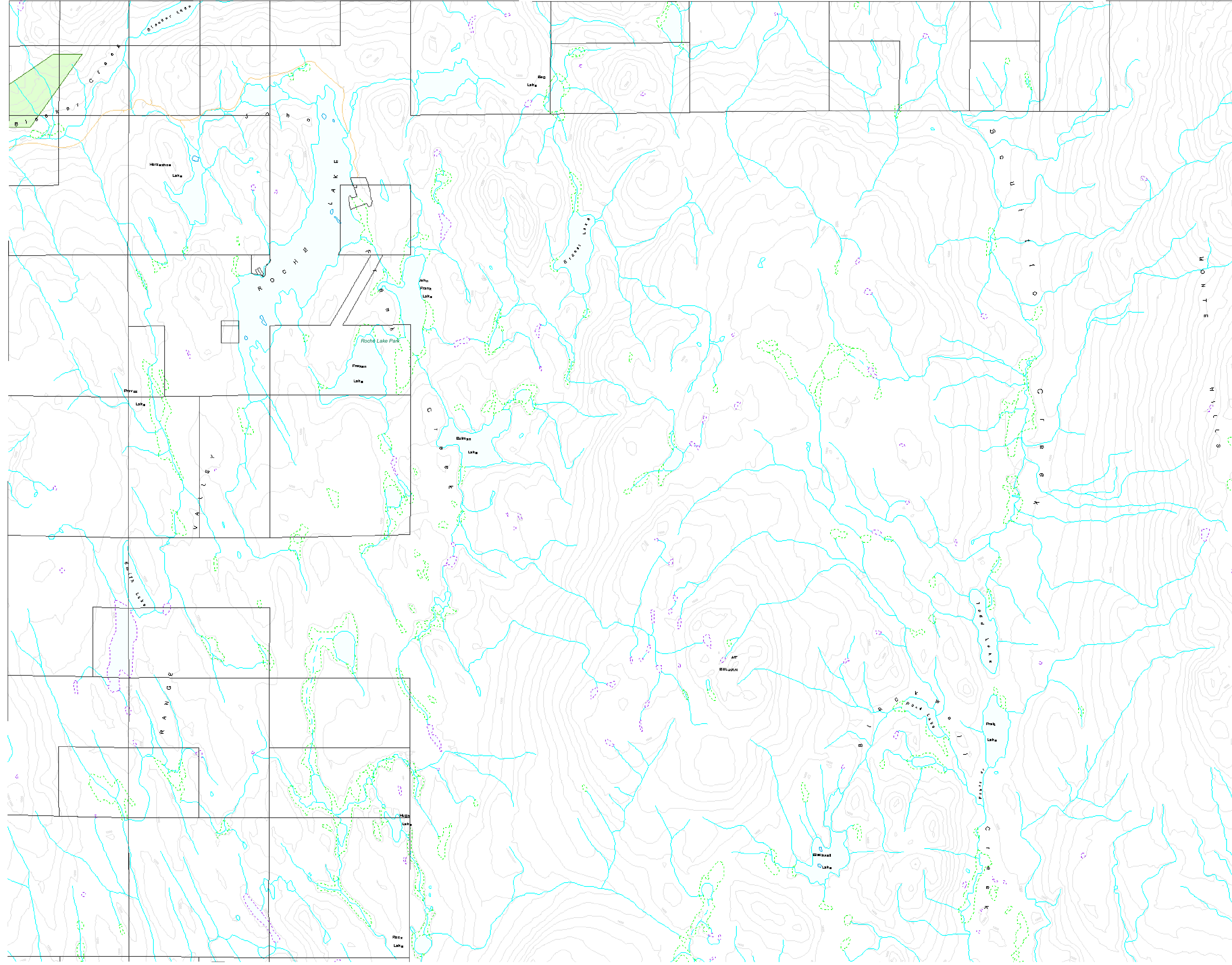


Map Amendment History as of 2007

| Date | Application |
|------|-------------|
| | |
| | |
| | |
| | |
| | |
| | |
| | |
| | |
| | |



Agricultural Land Commission
133-4940 Canada Way,
Burnaby B.C. V5G 4K6
Phone: (604) 660-7000
Fax: (604) 660-7033
ALC Website: www.alc.gov.bc.ca

This map represents Agricultural Land Reserve lands within the Thompson-Nicola Regional District, designated by Resolution #596/2006 of the Agricultural Land Commission.

Map created March 2008

Map compiled by the Geographic Information Systems Department, Agricultural Land Commission.

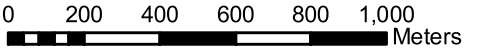
Base Mapping Sources:
Mapping control: B.C. Government
Planimetric: TRIM
Cadastral: Integrated Cadastre Initiative

The Agricultural Land Commission assumes no liability for the accuracy of the base mapping information.

| | | |
|--|---|---|
|  Agricultural Land Reserve |  Property Boundaries |  Contour Interval 20 metres B.C. Albers Projection NAD 83 |
|  Regional District Boundaries |  Indian Reserves | |
|  Municipal Boundaries | | |

REGIONAL DISTRICT
Thompson-Nicola

SCALE: 1 : 20 000



B.C.G.S. MAP REFERENCE NUMBER:
921.050