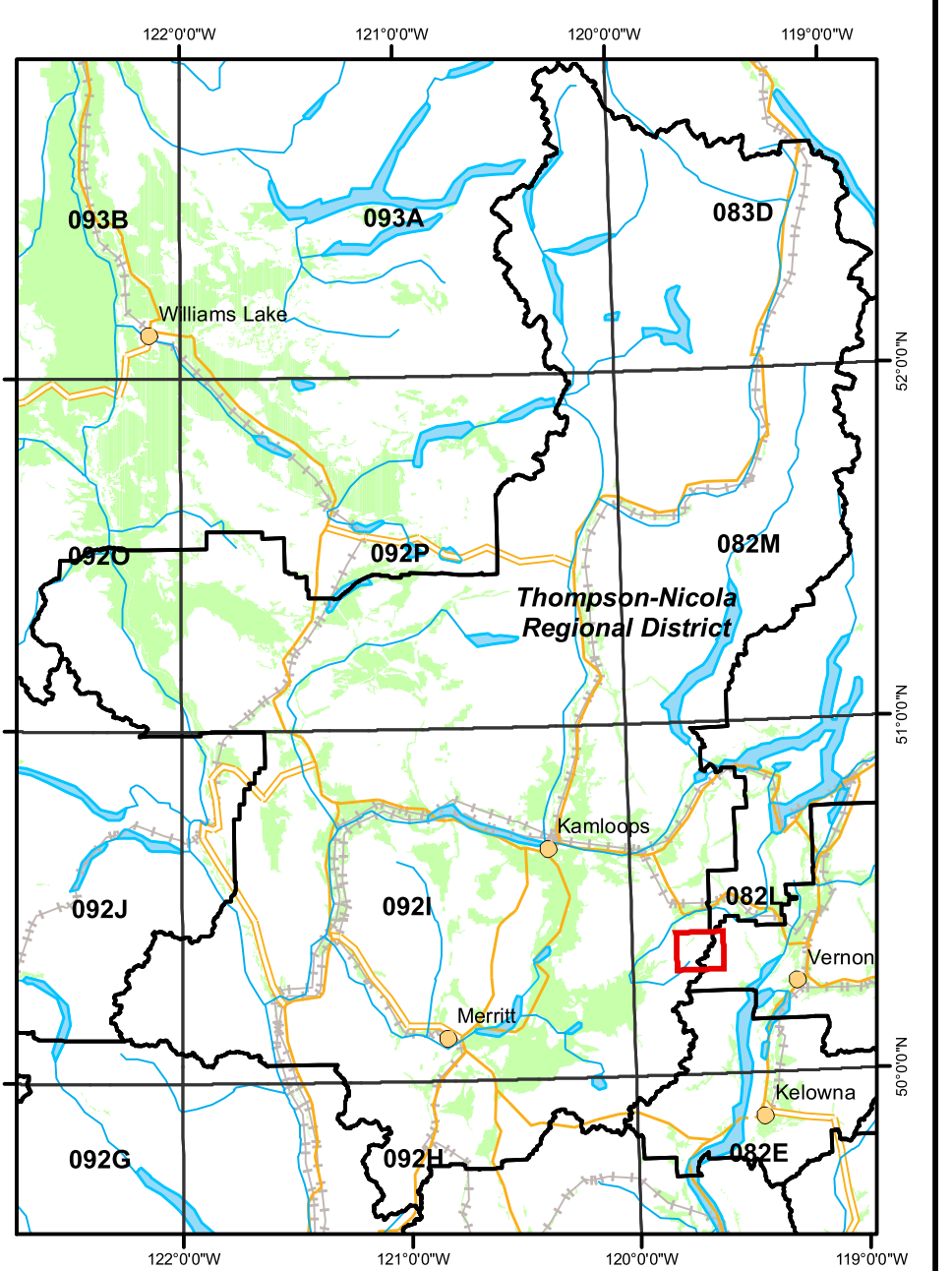


Map Amendment History as of 2007

Date	Application

Map Location



Agricultural Land Commission
 133-4940 Canada Way,
 Burnaby B.C. V5G 4K6
 Phone: (604) 660-7000
 Fax: (604) 660-7033
 ALC Website: www.alc.gov.bc.ca

This map represents Agricultural Land Reserve lands within the Thompson-Nicola Regional District, designated by Resolution #596/2006 of the Agricultural Land Commission.
 Map created March 2008

Map compiled by the Geographic Information Systems Department, Agricultural Land Commission.
 Base Mapping Sources:
 Mapping control: B.C. Government
 Planimetric: TRIM
 Cadastral: Integrated Cadastre Initiative
 The Agricultural Land Commission assumes no liability for the accuracy of the base mapping information.

- Agricultural Land Reserve
- Regional District Boundaries
- Municipal Boundaries
- Property Boundaries
- Indian Reserves

Contour Interval 20 metres
 B.C. Albers Projection
 NAD 83

REGIONAL DISTRICT
 Thompson-Nicola
 SCALE: 1 : 20 000

B.C.G.S. MAP REFERENCE NUMBER:
82L.032