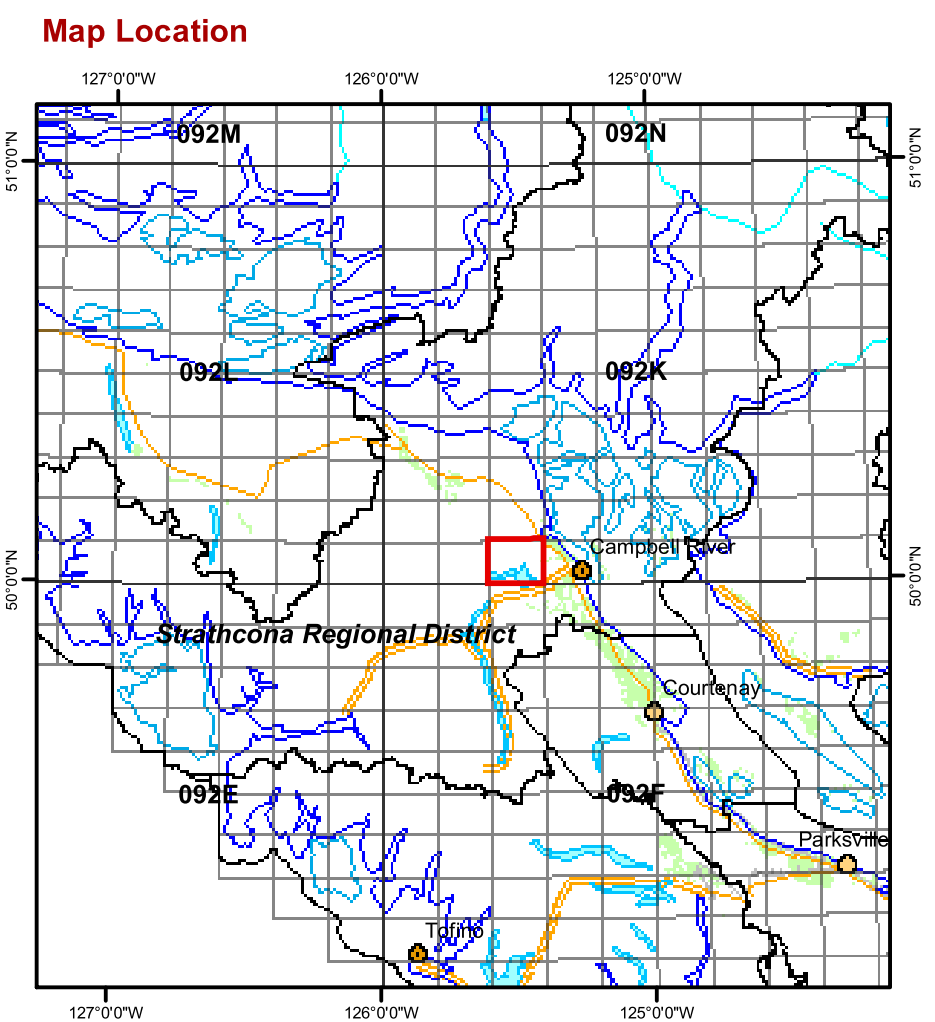


Map Amendment History as of 2007

| Date | Application |
|------|-------------|
|      |             |
|      |             |
|      |             |
|      |             |
|      |             |
|      |             |
|      |             |
|      |             |
|      |             |
|      |             |



92F.093



Agricultural Land Commission  
133-4940 Canada Way,  
Burnaby B.C. V5G 4K6  
Phone: (604) 660-7000  
Fax: (604) 660-7033  
ALC Website: www.alc.gov.bc.ca

This map represents Agricultural Land Reserve lands within the Strathcona Regional District, designated by Resolution #84/2002 of the Agricultural Land Commission.  
  
Map created March 2008

Map compiled by the Geographic Information Systems Department, Agricultural Land Commission.  
  
Base Mapping Sources:  
Mapping control: B.C. Government  
Planimetric: TRIM  
Cadastral: Integrated Cadastre Initiative  
  
The Agricultural Land Commission assumes no liability for the accuracy of the base mapping information.

- Agricultural Land Reserve
- Regional District Boundaries
- Municipal Boundaries
- Property Boundaries
- Indian Reserves

Contour Interval 20 metres  
  
B.C. Albers Projection  
NAD 83

REGIONAL DISTRICT  
Strathcona  
  
SCALE: 1 : 20 000  
0 200 400 600 800 1,000 Meters

B.C.G.S. MAP REFERENCE NUMBER:  
  
**92K.003**