



MINUTES OF THE PROVINCIAL AGRICULTURAL LAND COMMISSION

A meeting was held by the Provincial Agricultural Land Commission on January 22, 2014 at the offices of the Commission located at #133 – 4940 Canada Way, Burnaby, B.C. as it relates to Applications #53569 & #53570.

COMMISSION MEMBERS PRESENT:

Richard Bullock	Chair
Jennifer Dyson	Vice-Chair
Gordon Gillette	Vice-Chair
Sylvia Pranger	Vice-Chair
Bert Miles	Commissioner
Jim Johnson	Commissioner
Jerry Thibeault	Commissioner
Lucille Dempsey	Commissioner
Jim Collins	Commissioner

COMMISSION STAFF PRESENT:

Brian Underhill	Deputy Chief Executive Officer
Colin Fry	Chief Tribunal Officer
Reed Bailey	Planner
Gordon Bednard	Planner
Lindsay McCoubrey	Planner

APPLICATION ID: #53569

PROPOSAL: A) To exclude 1437.7 ha of land from the ALR pursuant to section 29(1) of the *Agricultural Land Commission Act* (the “Act”); and

APPLICATION ID: #53570

PROPOSAL: B) To include 739.9 ha of land into the ALR pursuant to section 17(1) of the Act.

IT WAS

MOVED BY: Commissioner

Thibeault SECONDED BY:

Commissioner Pranger

THAT in regard to the proposed exclusion of 1437.7 ha of land from the ALR and to include 739.9 ha of land into the ALR pursuant to s. 29(1) and s. 17(1) of the *Agricultural Land Commission Act* respectively, the Commission decided as follows:

Area 1 (Morrissey): The Commission approves the exclusion from the ALR of the properties numbered 1.1 – 1.3 inclusive & 1.6 – 1.10 inclusive as identified on the Property Information Spreadsheet – See EXHIBIT 1. The properties excluded from the ALR are identified on **DECISION MAP 1**;

Area 1 (Morrissey): The Commission approves the inclusion into the ALR of the property numbered 1.5 and did NOT include the property numbered 1.4 as identified on the Property Information Spreadsheet – See EXHIBIT 1. The property included into the ALR and the property not included into the ALR are identified on **DECISION MAP 1**;

Area 2 (Vanlerberg Road): The Commission approves the exclusion from the ALR of the properties numbered 2.1 – 2.16 inclusive as identified on the Property Information Spreadsheet – See EXHIBIT 1. The properties excluded from the ALR are identified on **DECISION MAP 2**;

Area 3 (South of Anderson Road): The Commission approves the exclusion from the ALR of the properties numbered 3.1 – 3.5 inclusive as identified on the Property Information Spreadsheet – See EXHIBIT 1. The properties excluded from the ALR are identified on **DECISION MAP 3**;

Area 4 (Anderson Road): The Commission approves the exclusion from the ALR of the properties numbered 4.1 – 4.7 inclusive & 4.10 – 4.33 inclusive and did NOT exclude the properties numbered 4.8 & 4.9 as identified on the Property Information Spreadsheet – See EXHIBIT 1. The properties excluded from the ALR and the properties not included into the ALR are identified on **DECISION MAP 4**;

Area 5 (Ghostrider): The Commission approves the exclusion from the ALR of the properties numbered 5.1 – 5.37 inclusive as identified on the Property Information Spreadsheet – See EXHIBIT 1. The properties excluded from the ALR are identified on **DECISION MAP 5**;

Area 5 (Ghostrider): The Commission did NOT include the property numbered 5.38 as identified on the Property Information Spreadsheet – See EXHIBIT 1. The property not included into the ALR is identified on **DECISION MAP 5**;

Area 6 (North Dicken Road): The Commission approves the exclusion from the ALR of the properties numbered 6.1 – 6.3 inclusive as identified on the Property Information Spreadsheet – See EXHIBIT 1. The properties excluded from the ALR are identified on **DECISION MAP 6**;

Area 7 (Hosmer): The Commission approves the exclusion from the ALR of the properties numbered 7.1 – 7.57 inclusive as identified on the Property Information Spreadsheet – See EXHIBIT 1. The properties excluded from the ALR are identified on **DECISION MAP 7**;

Area 7 (Hosmer): The Commission approves the inclusion into the ALR of the property numbered 7.57 as identified on the Property Information Spreadsheet – See EXHIBIT 1. The property included into the ALR is identified on **DECISION MAP 7**;

Area 8 (North Hosmer): The Commission approves the exclusion from the ALR of the properties numbered 8.5 – 8.11 inclusive as identified on the Property Information Spreadsheet – See EXHIBIT 1. The properties excluded from the ALR are identified on **DECISION MAP 8**;

Area 8 (North Hosmer): The Commission approves the inclusion into the ALR of the properties numbered 8.1 – 8.4 inclusive as identified on the Property Information Spreadsheet – See EXHIBIT 1. The properties included into the ALR are identified on **DECISION MAP 8**;

Area 9 (South Sparwood): The Commission approves the exclusion from the ALR of the properties numbered 9.1 – 9.8 inclusive as identified on the Property Information Spreadsheet – See EXHIBIT 1. The properties excluded from the ALR are identified on **DECISION MAP 9**;

Area 10 (Central Sparwood): The Commission approves the exclusion from the ALR of the property numbered 10.1 as identified on the Property Information Spreadsheet – See EXHIBIT 1. The property excluded from the ALR is identified on **DECISION MAP 10**;

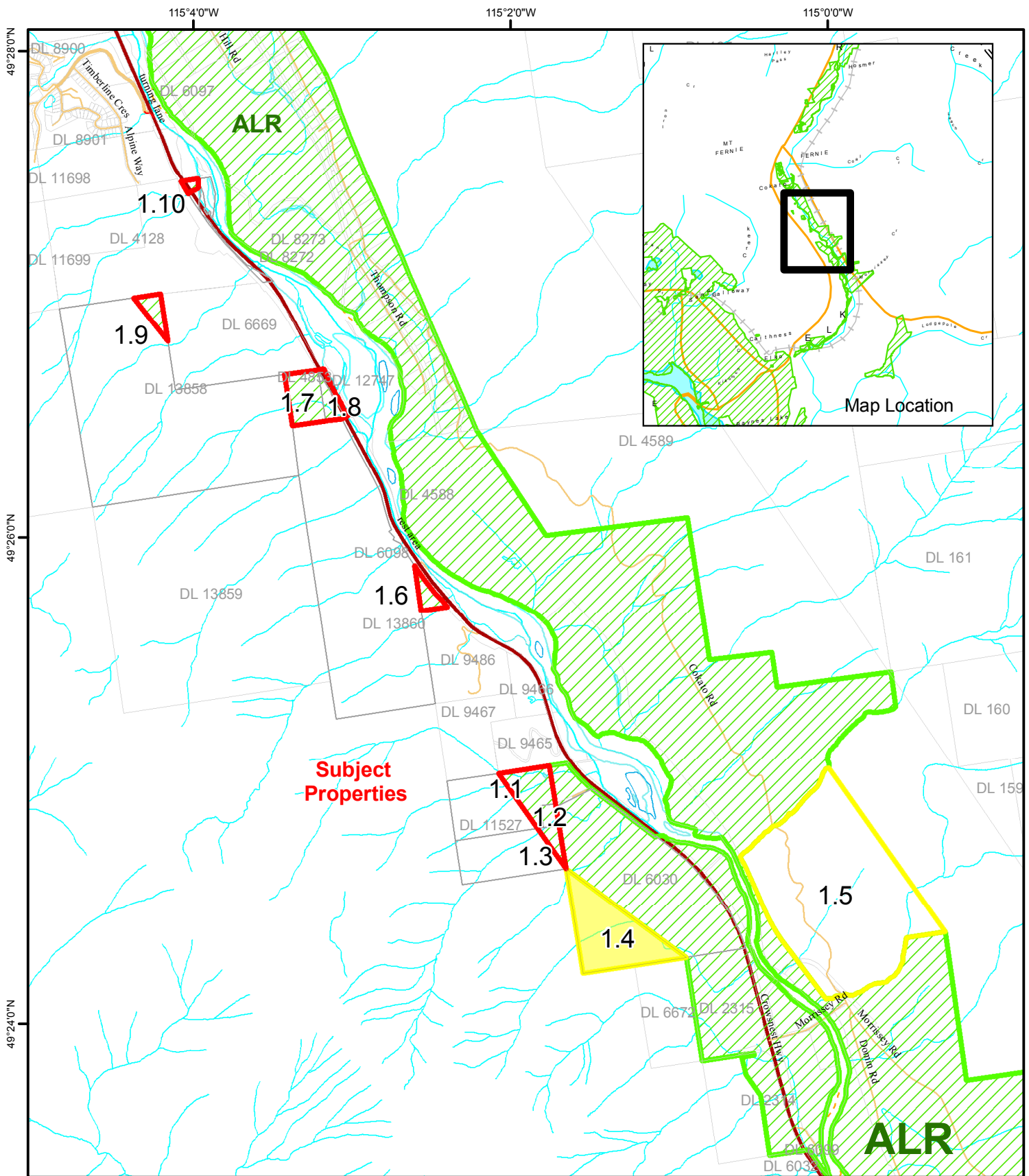
Area 11 (Northern Sparwood Mine Site): The Commission approves the exclusion from the ALR of the property numbered 11.1 as identified on the Property Information Spreadsheet – See EXHIBIT 1. The property excluded from the ALR is identified on **DECISION MAP 11**;

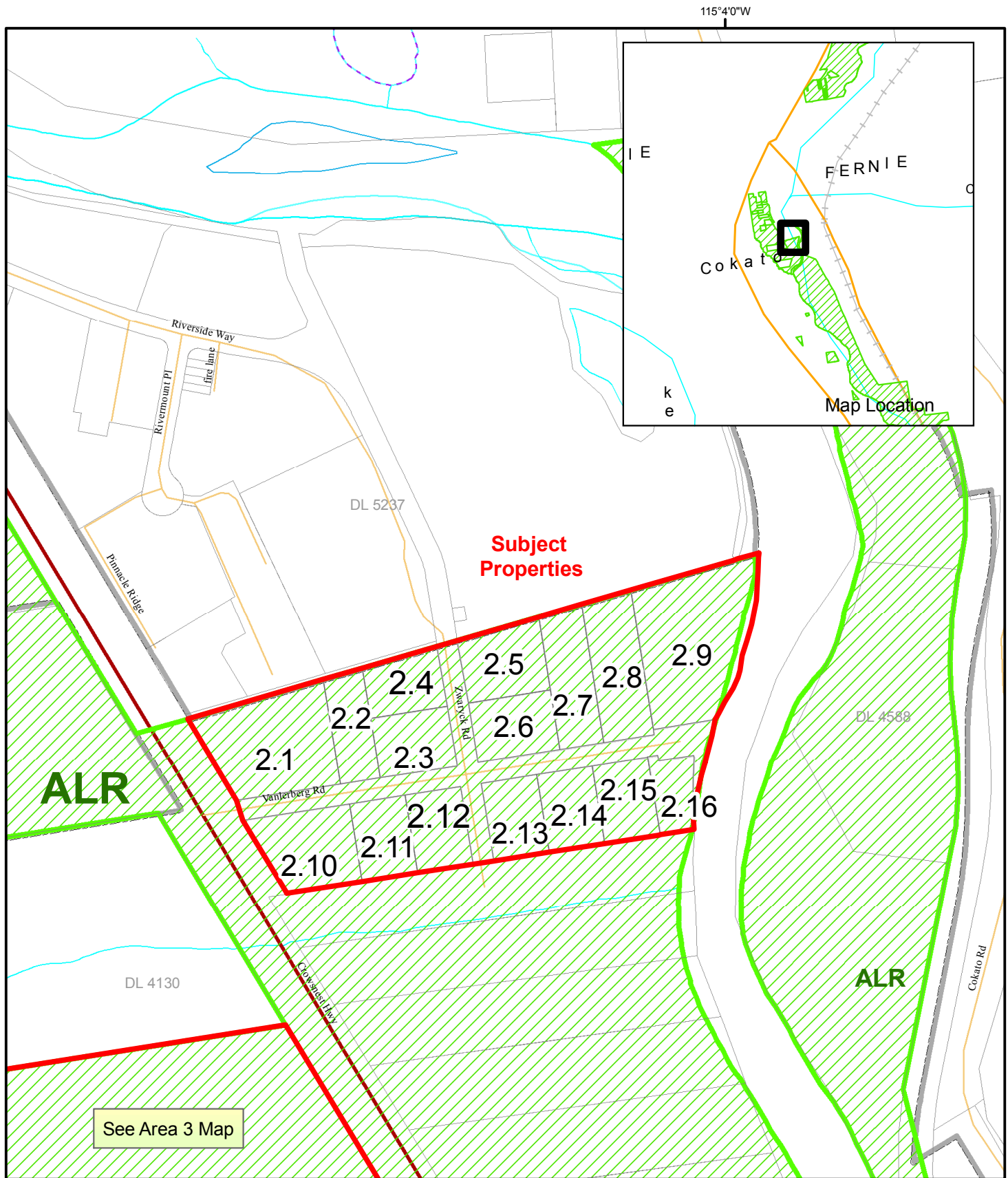
Area 12 (Northern Elk Valley): The Commission approves the inclusion into the ALR of the properties numbered 12.1 – 12.5 inclusive and did NOT include the properties numbered 12.6 & 12.7 as identified on the Property Information Spreadsheet – See EXHIBIT 1. The properties included into the ALR and the properties not included into the ALR are identified on **DECISION MAP 12**;

AND FINALLY THAT The Commission wishes to thank the RDEK for completing much of the groundwork and analysis of the areas of interest identified in the ALC Review. The Commission would also like to thank the RDEK, District of Sparwood and the City of Fernie for their commitment to assisting the ALR throughout the duration of this project. Finally, the Commission would like to thank Darrell Smith of the Ministry of Agriculture for providing valuable insight and accompanying Commission staff on their many visits to the Elk Valley.


As to Application #53569 (Exclusion)
CARRIED
Resolution #5/2014

As to Application #53570 (Inclusion)
CARRIED
Resolution #6/2014





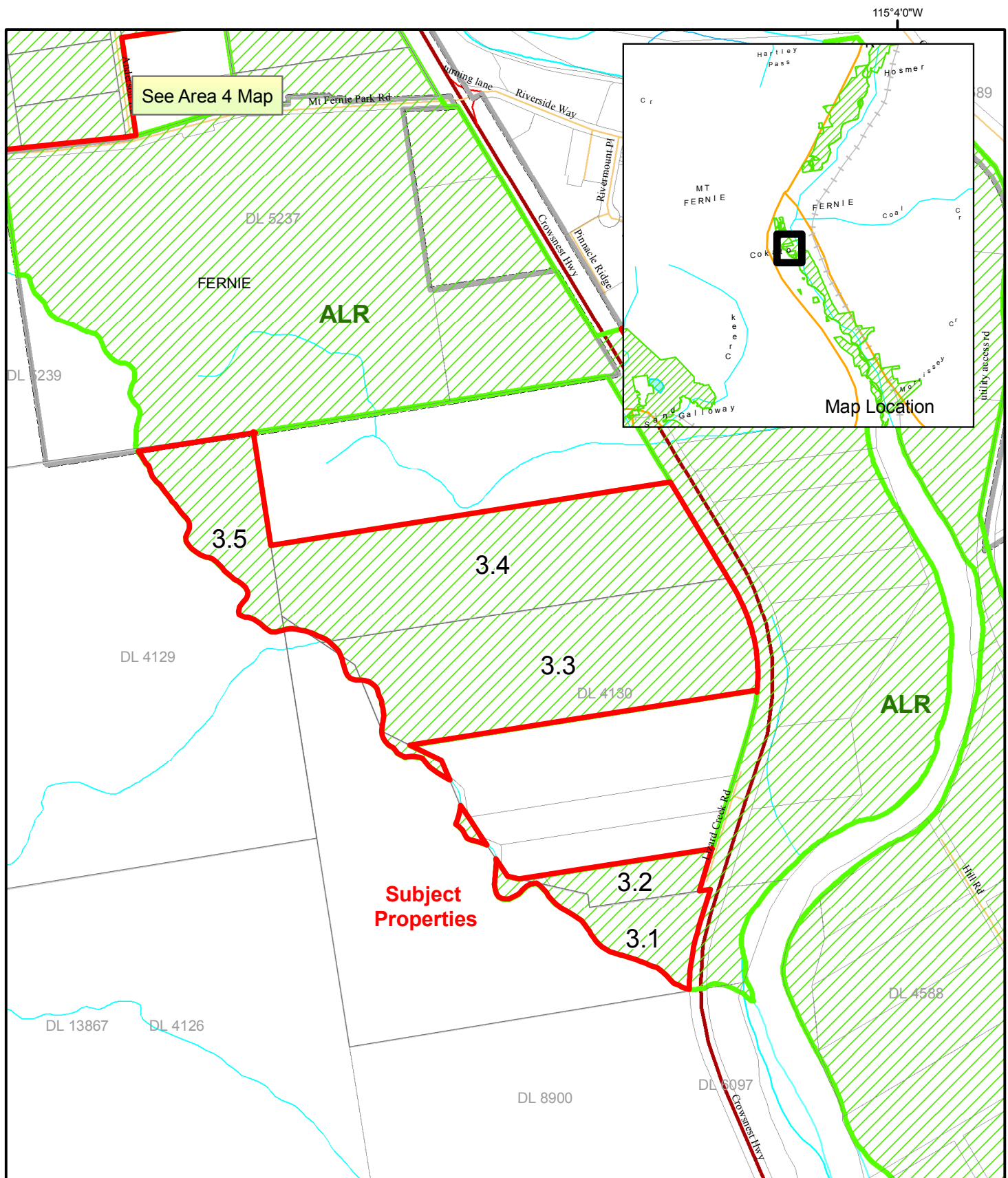
Legend

 Areas approved for exclusion from the ALR by Resolution number 5/2014


* Note -2.xx = Property Number

Decision Map Two Area Two: Vanlerberg Road

ALC File Numbers: 53569 & 53570



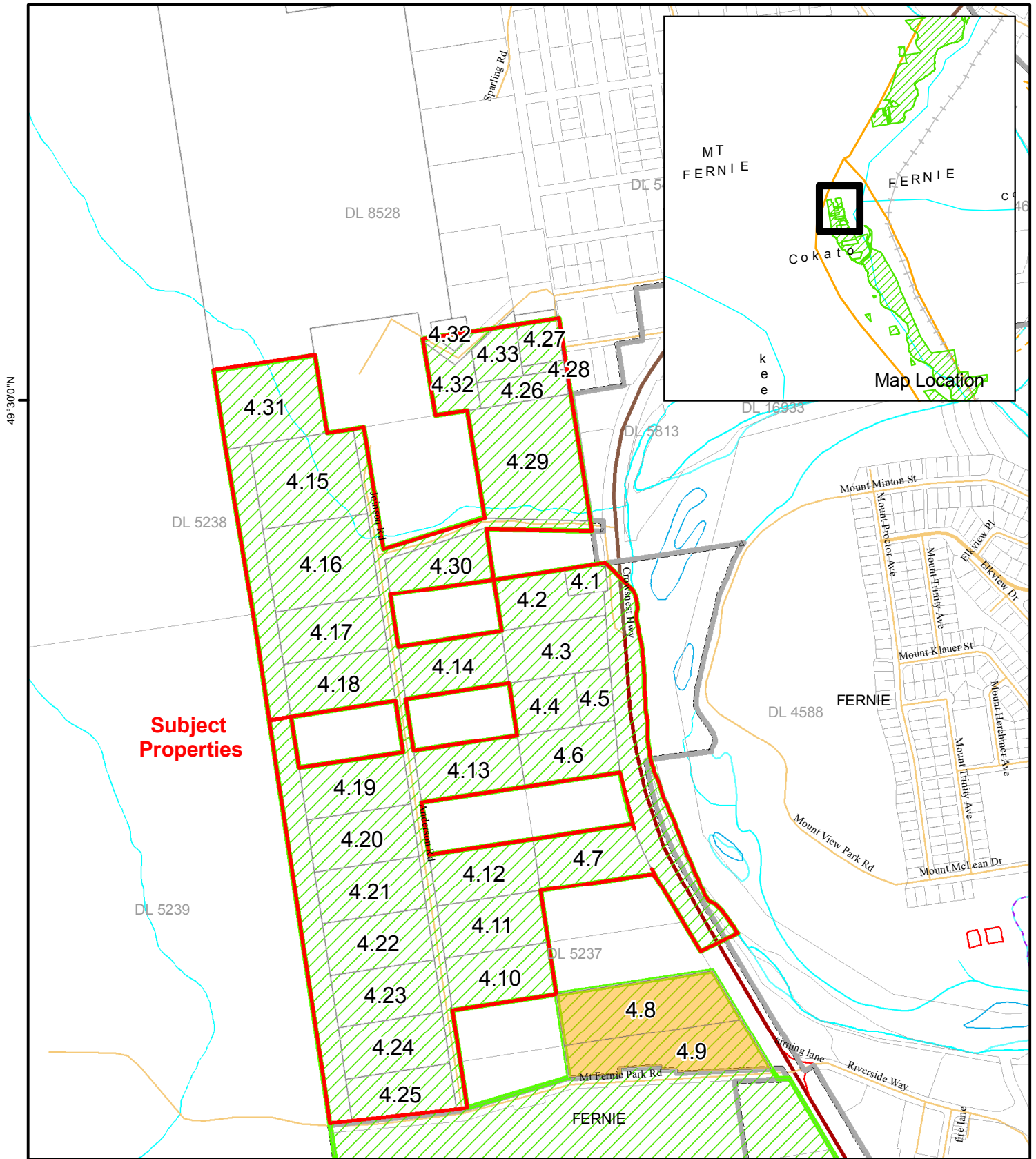
Legend

 Areas approved for exclusion from the ALR by Resolution number 5/2014

* Note -3.xx = Property Number

Decision Map Three Area Three: South of Anderson Road

ALC File Numbers: 53569 & 53570



Legend

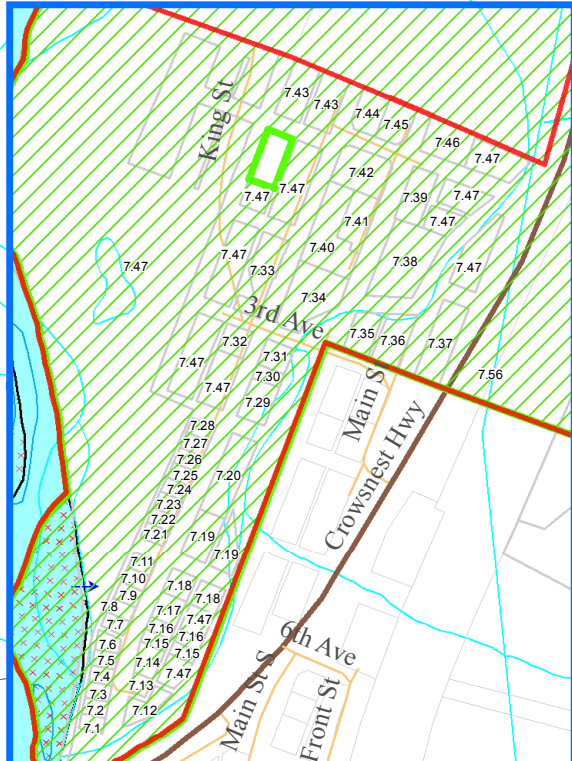
Areas approved for exclusion from the ALR by Resolution number 5/2014

Exclusion not being pursued

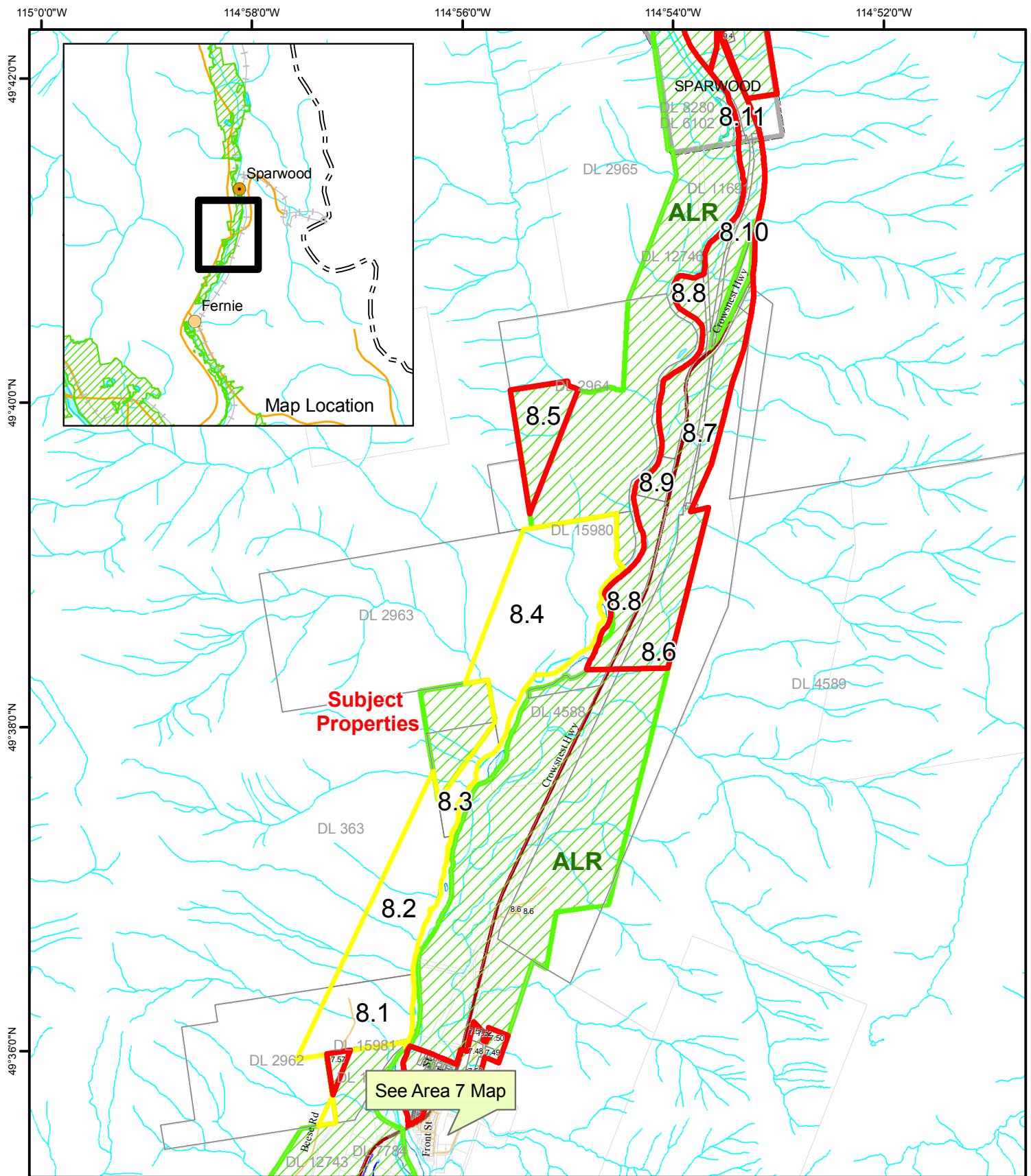
* Note - 4.xx = Property Number

Decision Map Four Area Four: Anderson Road

ALC File Numbers: 53569 & 53570



ALC File Numbers: 53569 & 53570



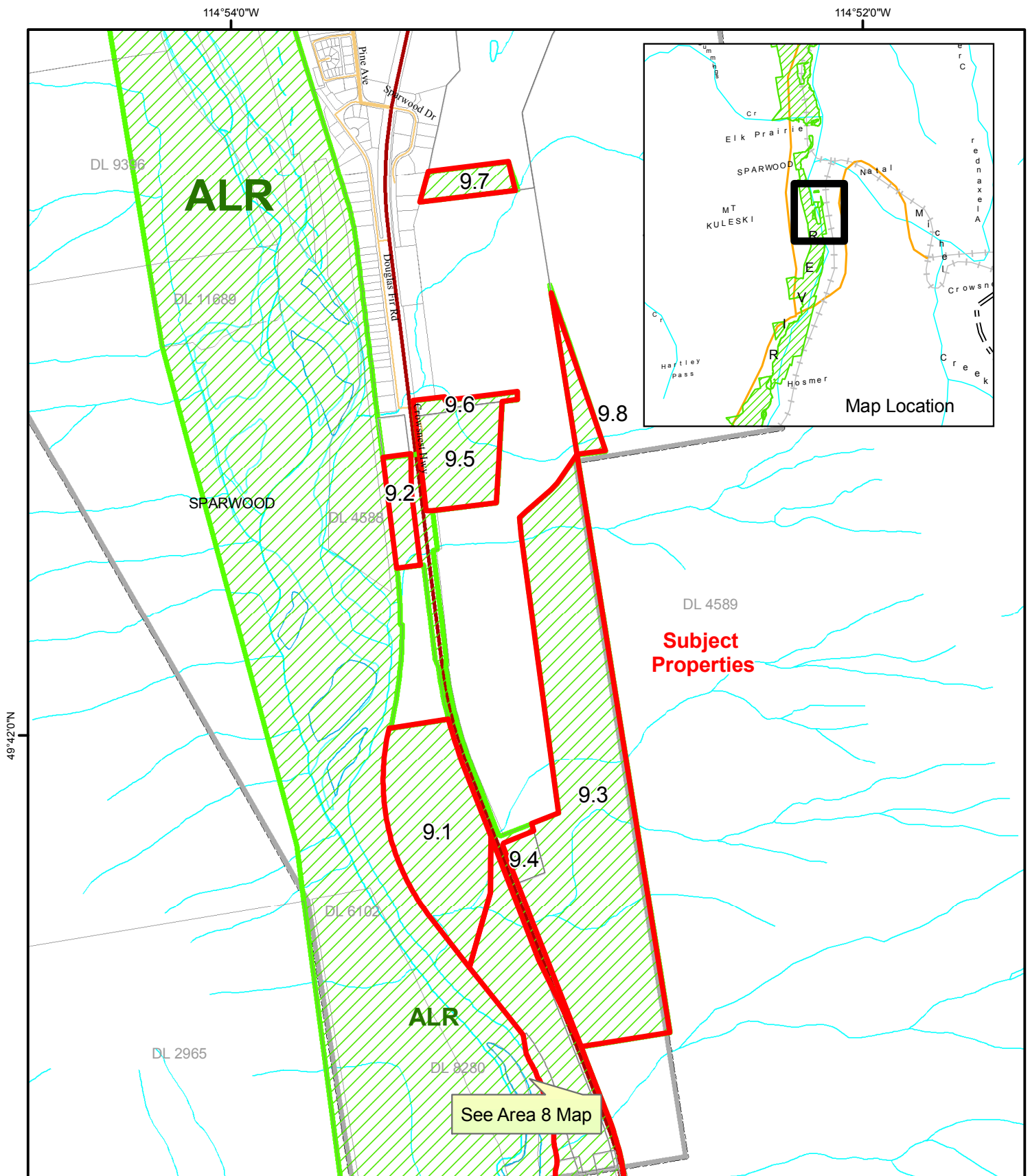
Legend

- Areas approved for exclusion from the ALR by Resolution number 5/2014
- Areas approved for inclusion from the ALR by Resolution number 6/2014

* Note -8.xx = Property Number

Decision Map Eight Area Eight: North Hosmer

ALC File Numbers: 53569 & 53570



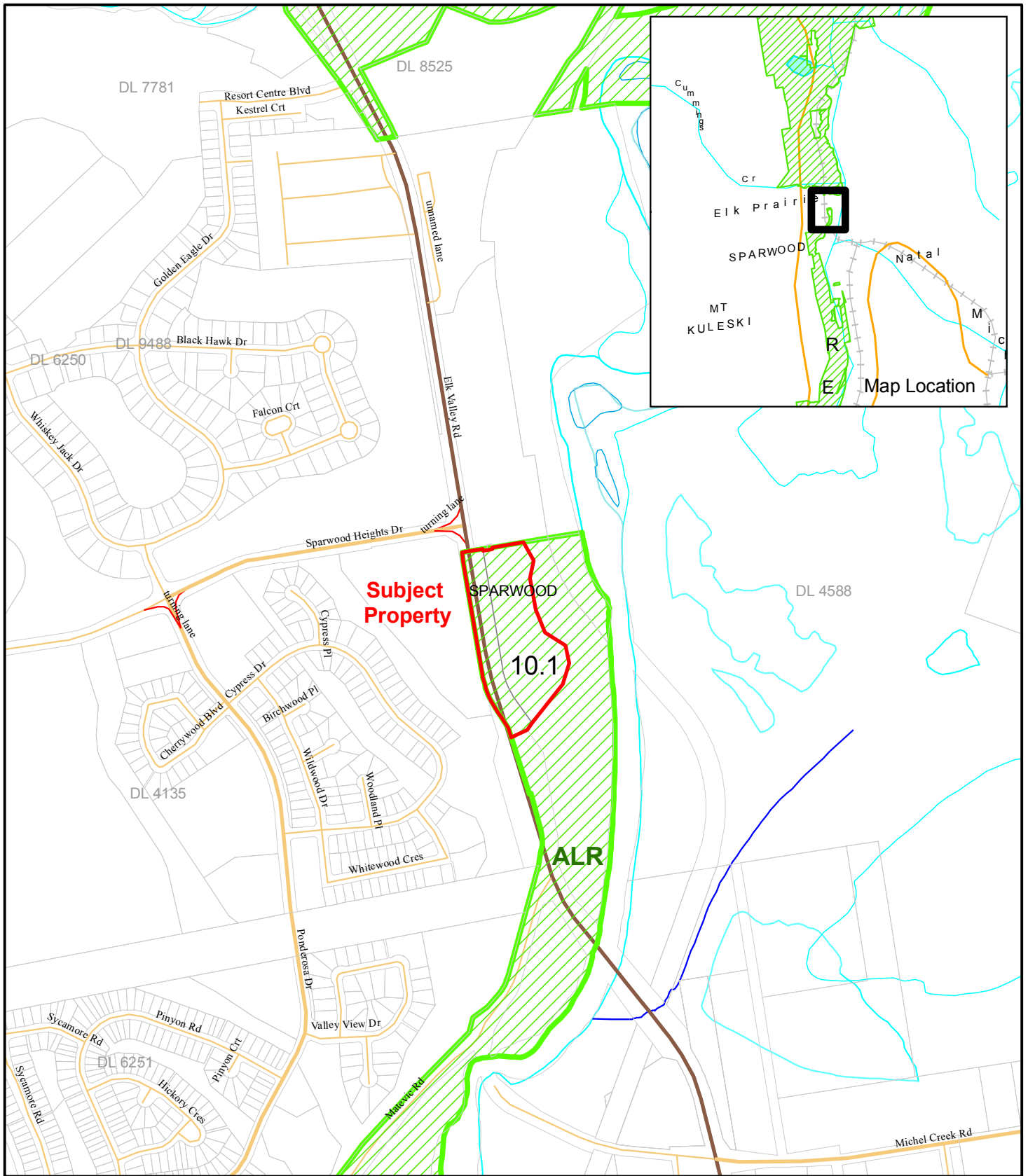
Legend

Areas approved for exclusion from the ALR by Resolution number 5/2014


* Note -9.xx = Property Number

Decision Map Nine Area Nine: South Sparwood

ALC File Numbers: 53569 & 53570



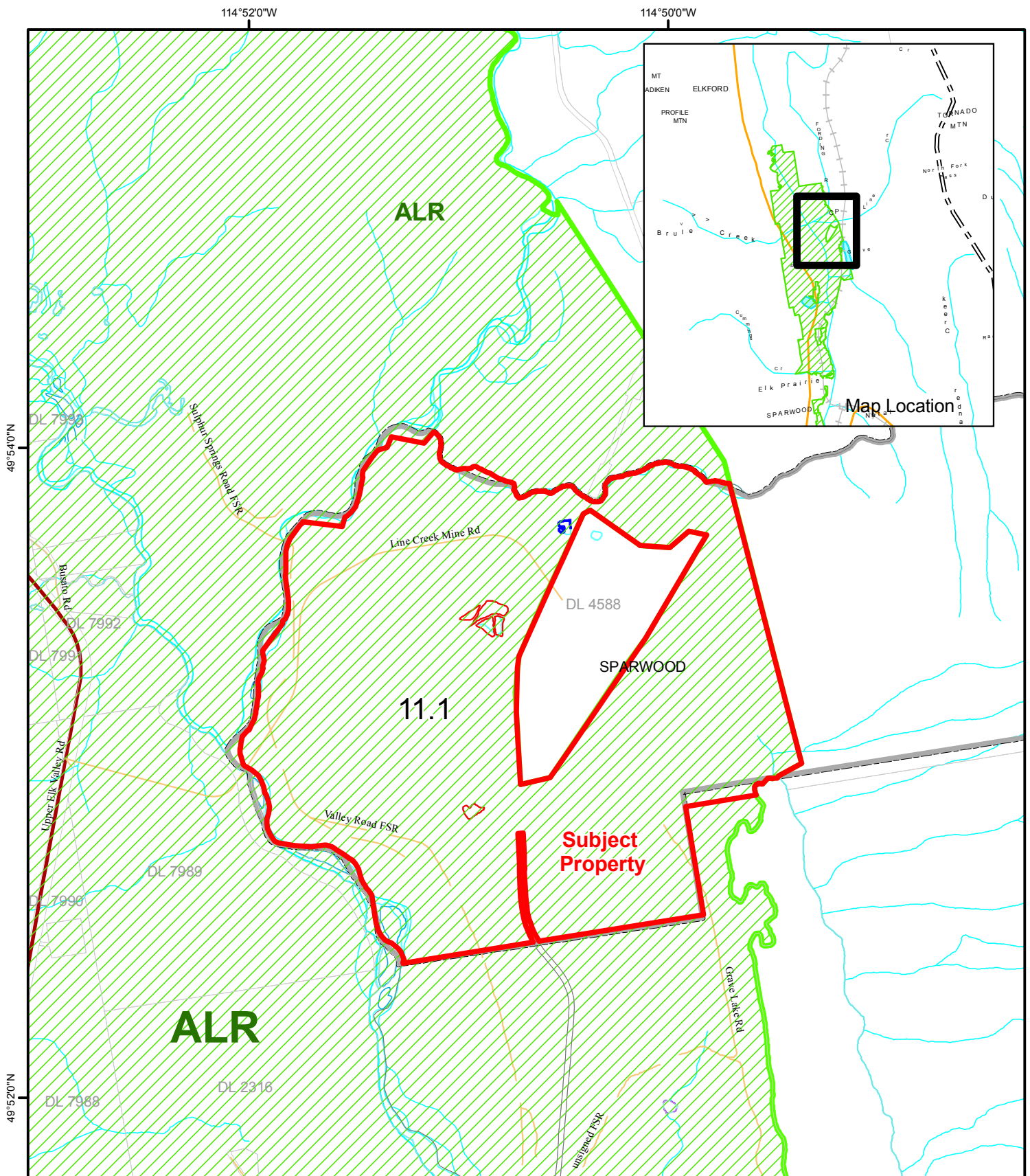
Legend

 Areas approved for exclusion from the ALR by Resolution 5/2014

* Note - 10.xx = Property Number

Decision Map Ten Area Ten: Central Sparwood

ALC File Numbers: 53569 & 53570



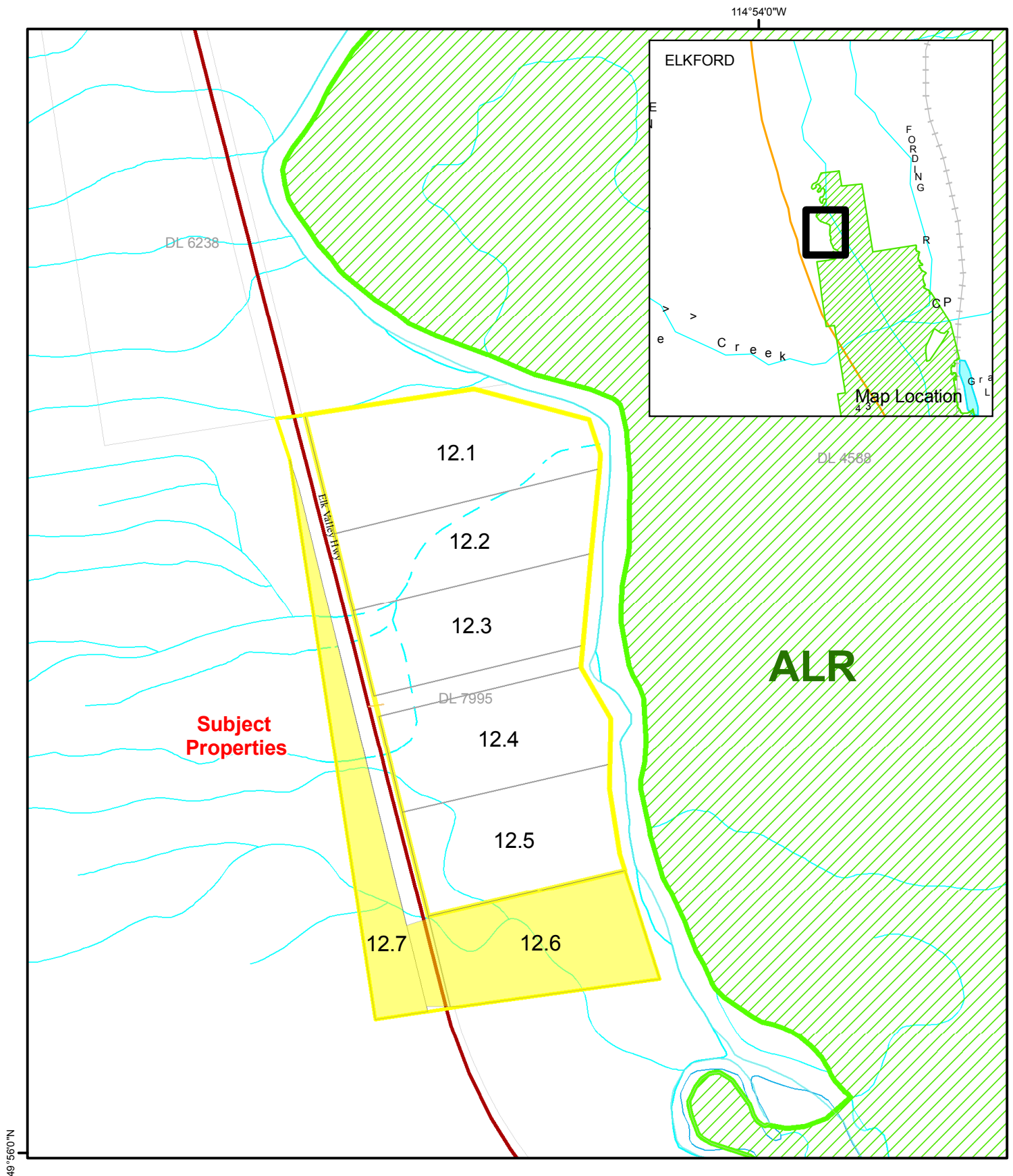
Legend

Areas approved for exclusion from the ALR by Resolution number 5/2014

* Note -11.xx = Property Number

Decision Map Eleven Area Eleven: Northern Sparwood Mine Site

ALC File Numbers: 53569 & 53570



Legend

- Areas approved for inclusion from the ALR by Resolution number 6/2014
- Inclusion not being pursued

* Note - 12.xx = Property Number

Decision Map Twelve Area Twelve: Northern Elk Valley

ALC File Numbers: 53569 & 53570