



**Agricultural Land Commission**  
133-4940 Canada Way  
Burnaby, British Columbia V5G 4K6  
Tel: 604 660-7000  
Fax: 604 660-7033  
www.alc.gov.bc.ca

March 31, 2010

Reply to the attention of Ron Wallace  
ALC File: #51643

Ministry of Transportation and Infrastructure  
Metrotower 1  
2400 – 4710 Kingsway  
Burnaby, BC V5H 4M2

Attention: Jon Buckle, Project Manager

**Re: Application for Transportation, Utility Corridor Use in the Agricultural Land Reserve**

Please find attached the Minutes of Resolution # **2348/2010** outlining the Commission's decision as it relates to the above noted application.

Please send two (2) paper prints of the final survey plans to this office. When the Commission confirms that all conditions have been met, it will authorize the Registrar of Land Titles to accept registration of the plan.

Other approvals may be necessary. Prior to proceeding, the Commission suggests you contact your Local Government.

Yours truly,

PROVINCIAL AGRICULTURAL LAND COMMISSION

Per:

A handwritten signature in black ink, appearing to read 'Erik Karlsen', is written over a light blue horizontal line.

Erik Karlsen, Chair

Enclosure: Minutes/Sketch Plan

cc: The Corporation of Delta



**Discussion**

The Commission supported the application as it meets the criteria associated with Resolution #15/2009 from application 37610 (BC Railway Company).

**IT WAS**

**MOVED BY:** Commissioner Tomlinson

**SECONDED BY:** Commissioner Bose

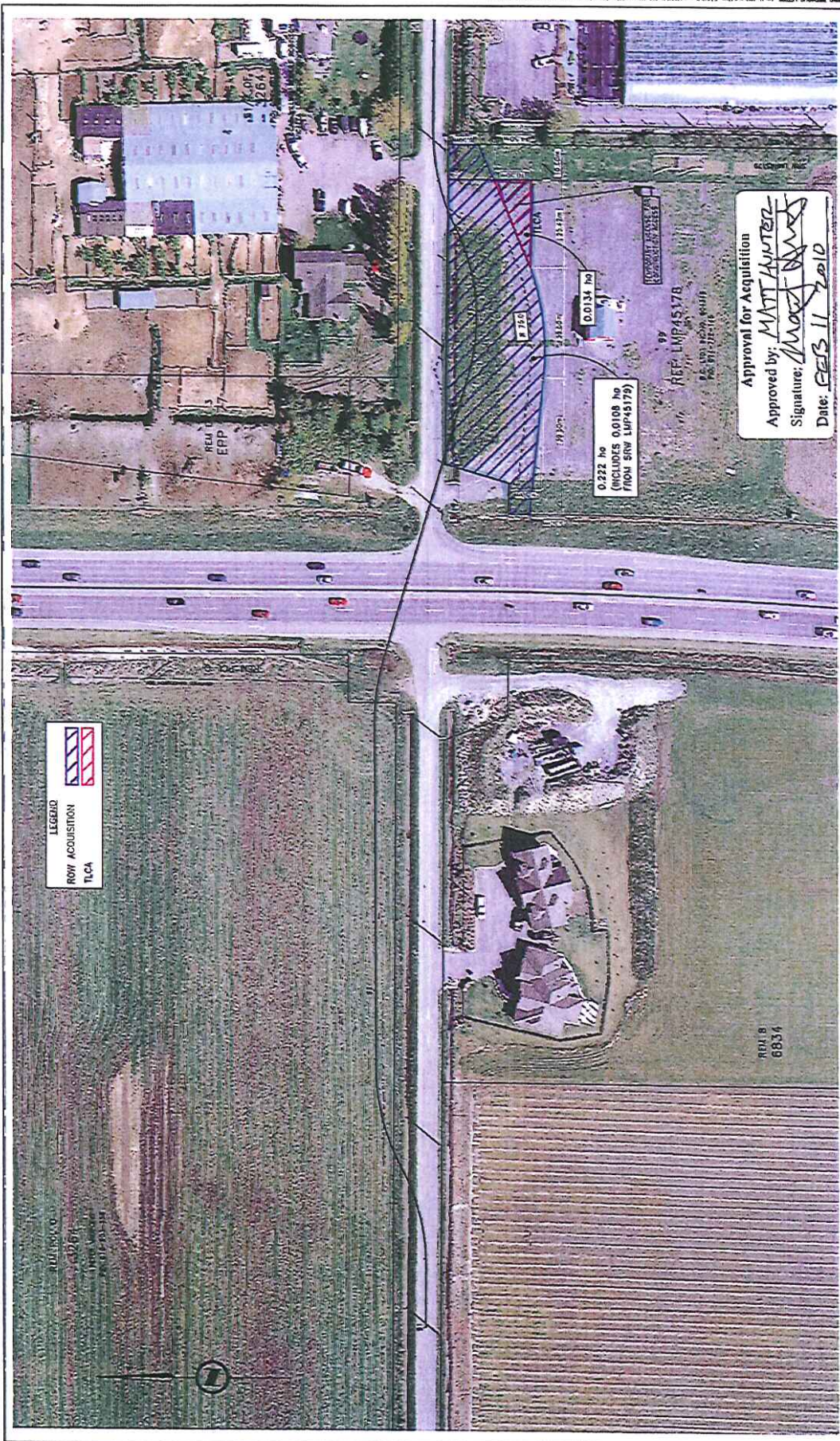
THAT the application to dedicate and construct the 28 Avenue overpass be allowed subject to the following conditions:


- The preparation of a subdivision plan to delineate the area for the overpass dedication per the drawing submitted with the application.
- the subdivision must be completed within three (3) years from the date of this decision.

This decision does not relieve the owner or occupier of the responsibility to comply with applicable Acts, regulations, bylaws of the local government. This includes zoning, subdivision, or other land use bylaws, and decisions of any authorities that have jurisdiction under an enactment.

**CARRIED**

**Resolution # 2348/2010**



**LEGEND**  
 ROW ACQUISITION  
 TLCA

DATE	BY	REVISION

**BRITISH COLUMBIA**  
The Best Place on Earth

**Ministry of Transportation and Infrastructure**

28TH AVE. / 57B ST.  
COMMERCIAL DISTRICT

PID: 024-722-148  
REV: 0

PROPERTY ACQUISITION PLAN

**Provincial Agricultural Land Commission**  
 Application #516443  
 Resolution #2348/2010



Approved for Overpass in the ALR

**NOTE:**  
 THIS DRAWING IS PREPARED FOR RIGHT-OF-WAY ACQUISITION PURPOSES ONLY. FOR DESIGN INFORMATION SEE CONSULTANT DESIGN DRAWINGS.