



Agricultural Land Commission
133-4940 Canada Way
Burnaby, British Columbia V5G 4K6
Tel: 604-660-7000
Fax: 604-660-7033
www.alc.gov.bc.ca

October 1, 2007

Reply to the attention of Terra Kaethler
ALC File: # J - 37528

District of North Cowichan
7030 Trans Canada Highway
North Cowichan, BC V9L 3X4

Dear Sir/Madam:

Re: Application to Include land in the Agricultural Land Reserve
Your File #3025-20-06-07

Please find attached the Minutes of Resolution # 449/2007 outlining the Commission's decision as it relates to the above noted application.

Please be advised that this application satisfies the conditions of Resolution #163/2007 (ALC file #J-37134). The subject properties are now subject to the *Agricultural Land Commission Act (ALCA) and Regulations*. For more information about these legislations and the Agricultural Land Commission, please visit our website at www.alc.gov.bc.ca.

By way of a copy of this decision, it will also confirm for the Registrar the area included into the ALR.

Yours truly,

PROVINCIAL AGRICULTURAL LAND COMMISSION

Per:

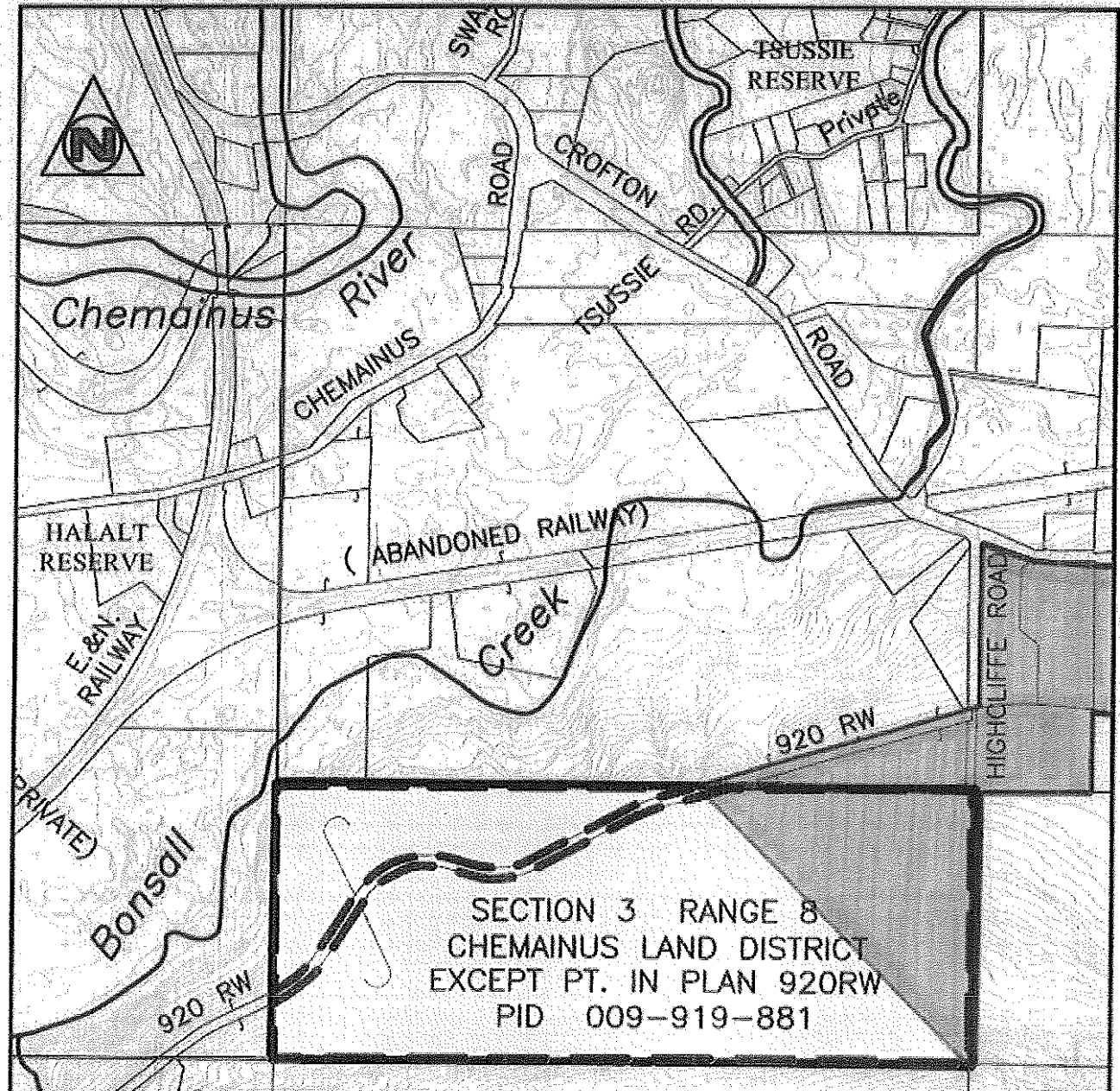
A handwritten signature in black ink, appearing to read 'Erik Karlsen', is written over the 'Per:' label. The signature is fluid and cursive.

Erik Karlsen, Chair

Cc: Victoria Land Titles Office, (PO Box 9255, Victoria, British Columbia, V8W 9J3)

Enclosure: Minutes/Sketch Plan

TK/lv
37528d1.



MAP 2

PROVINCIAL AGRICULTURAL LAND COMMISSION
 Application #J-37134 (Kirkpatrick)
 Resolution #163/2007



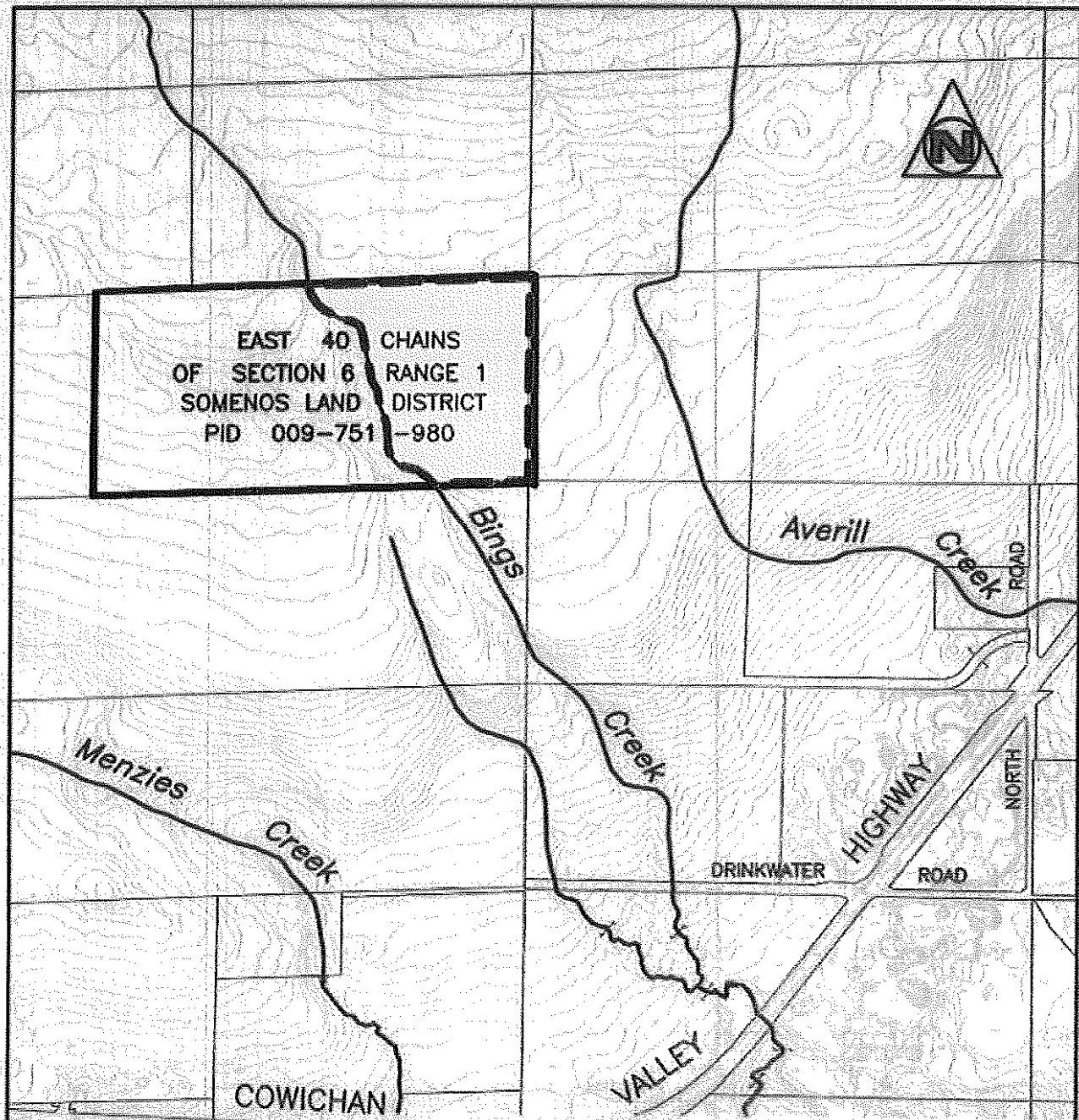
Bonsall Road Property – Section 3, Range 8,
 Chemainus District, Except Part in Plan 920RW



Area in the ALR



Area to be Included into the ALR



MAP 3

PROVINCIAL AGRICULTURAL LAND COMMISSION
 Application #J-37134 (Kirkpatrick)
 Resolution #163/2007

Mount Prevost Property – East 40 Chains of Section 6, Range 1, Somenos District



Area to be included into the ALR