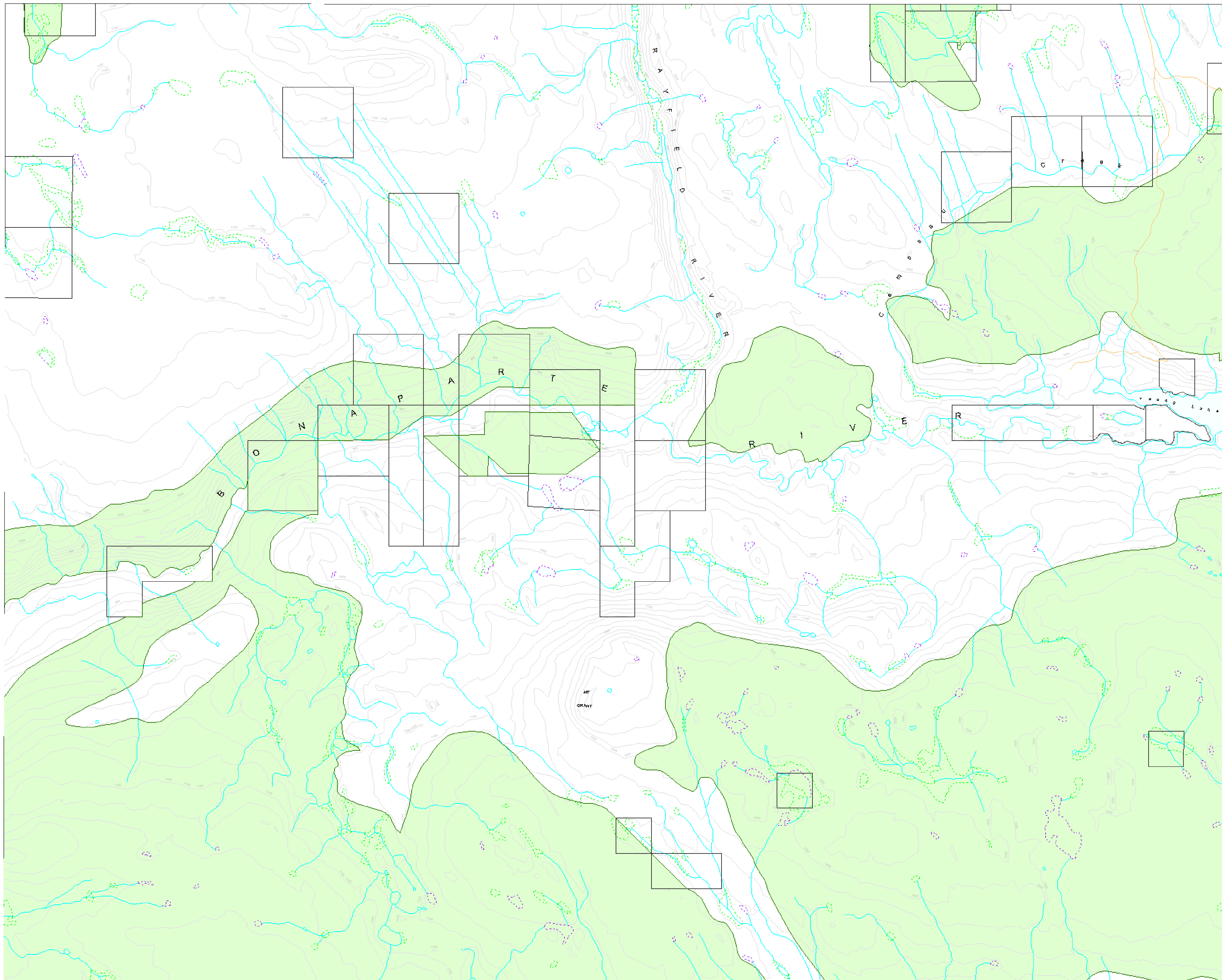


92P.024
92P.014
92P.024
92P.014

92P.035

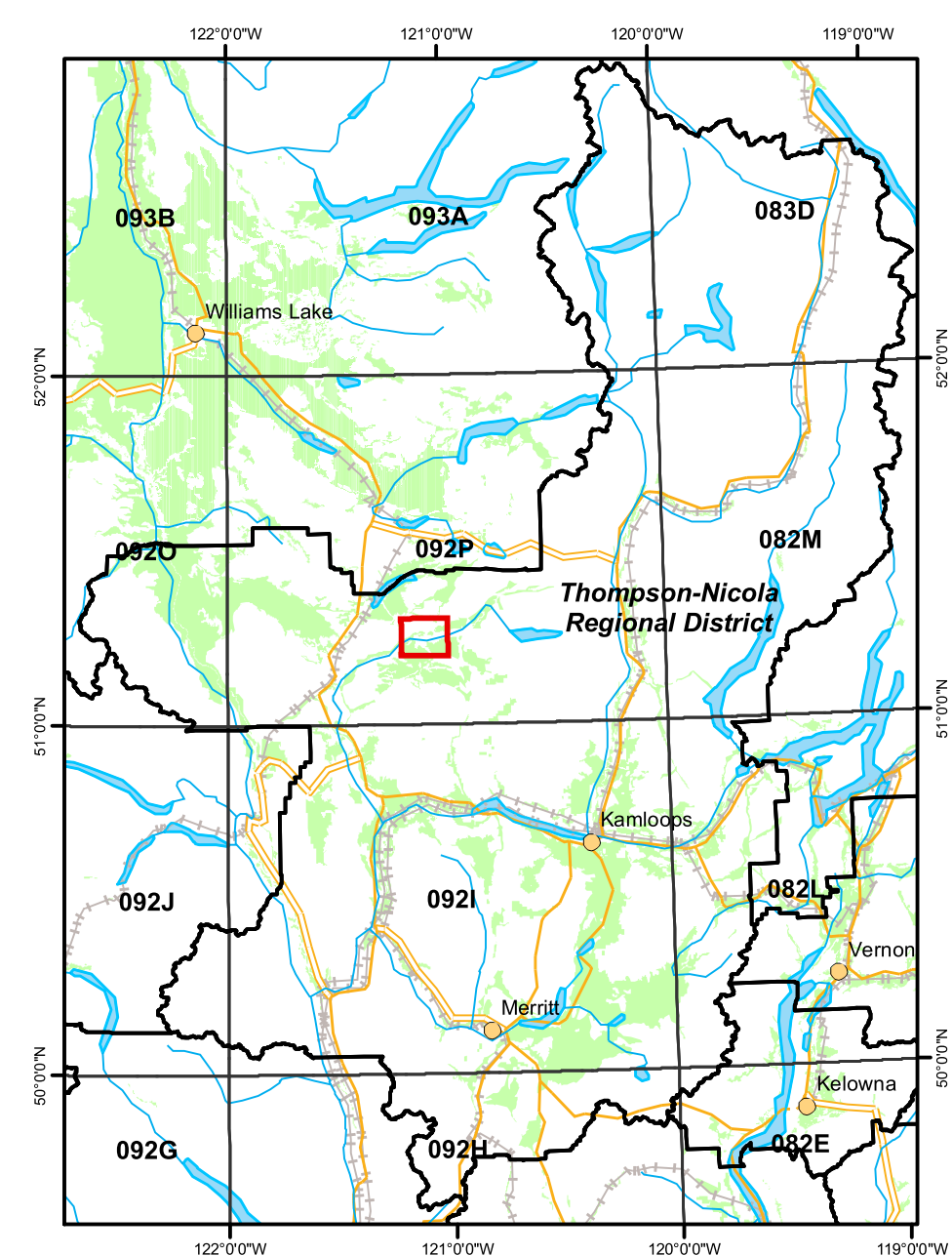
92P.025
92P.025
92P.025
92P.025



Map Amendment History as of 2007

Date	Application

Map Location



Agricultural Land Commission
133-4940 Canada Way,
Burnaby B.C. V5G 4K6
Phone: (604) 660-7000
Fax: (604) 660-7033
ALC Website: www.alc.gov.bc.ca

This map represents Agricultural Land Reserve lands within the Thompson-Nicola Regional District, designated by Resolution #596/2006 of the Agricultural Land Commission.

Map created March 2008

Map compiled by the Geographic Information Systems Department, Agricultural Land Commission.

Base Mapping Sources:
Mapping control: B.C. Government
Planimetric: TRIM
Cadastral: Integrated Cadastre Initiative

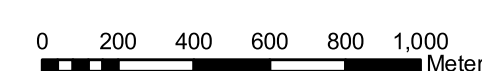
The Agricultural Land Commission assumes no liability for the accuracy of the base mapping information.

- Agricultural Land Reserve
- Regional District Boundaries
- Municipal Boundaries
- Property Boundaries
- Indian Reserves

Contour Interval 20 metres
B.C. Albers Projection
NAD 83

REGIONAL DISTRICT
Thompson-Nicola

SCALE: 1 : 20 000



B.C.G.S. MAP REFERENCE NUMBER:

92P.025