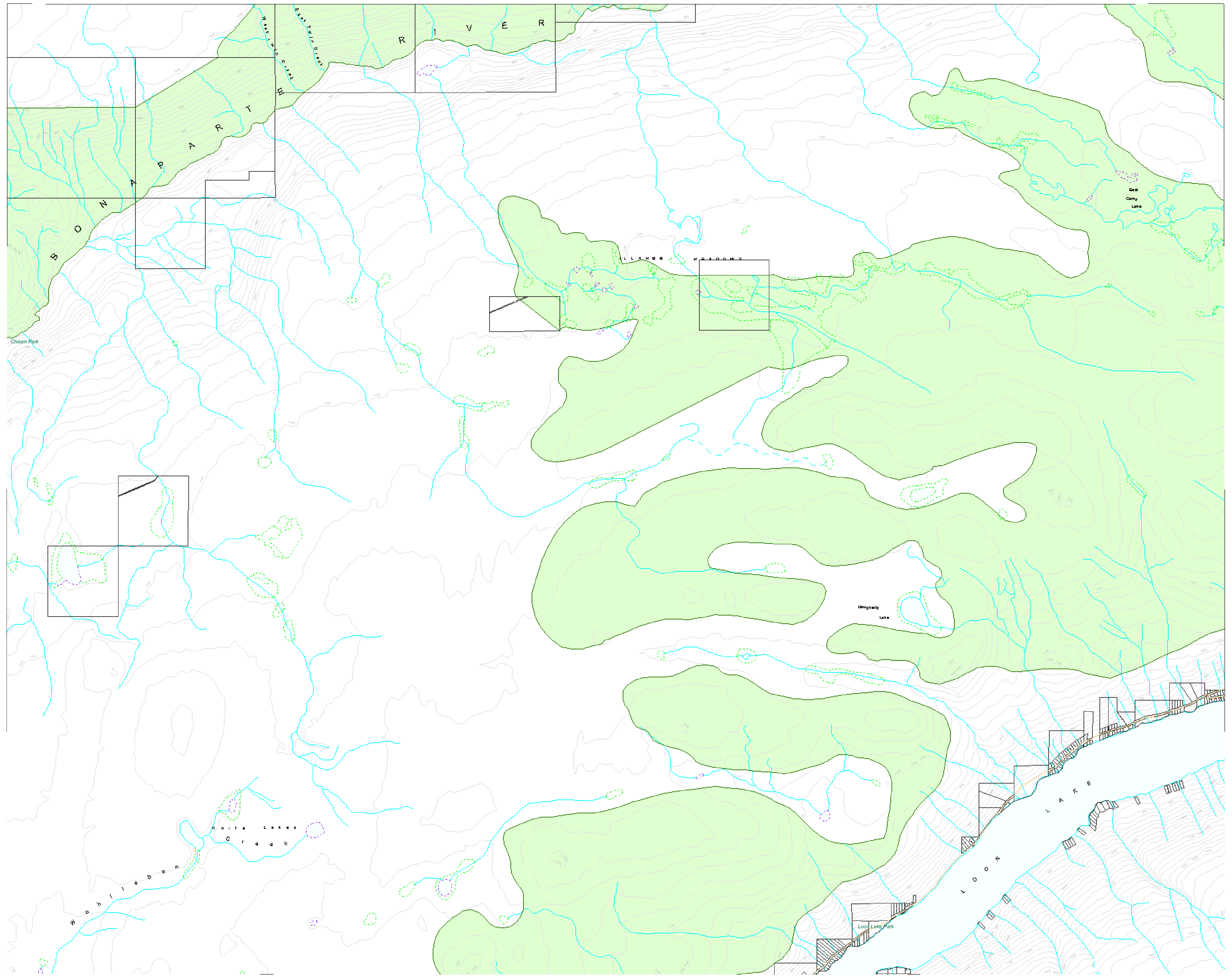


92P.013  
92P.013  
92P.013

92P.024  
92P.024  
92P.004

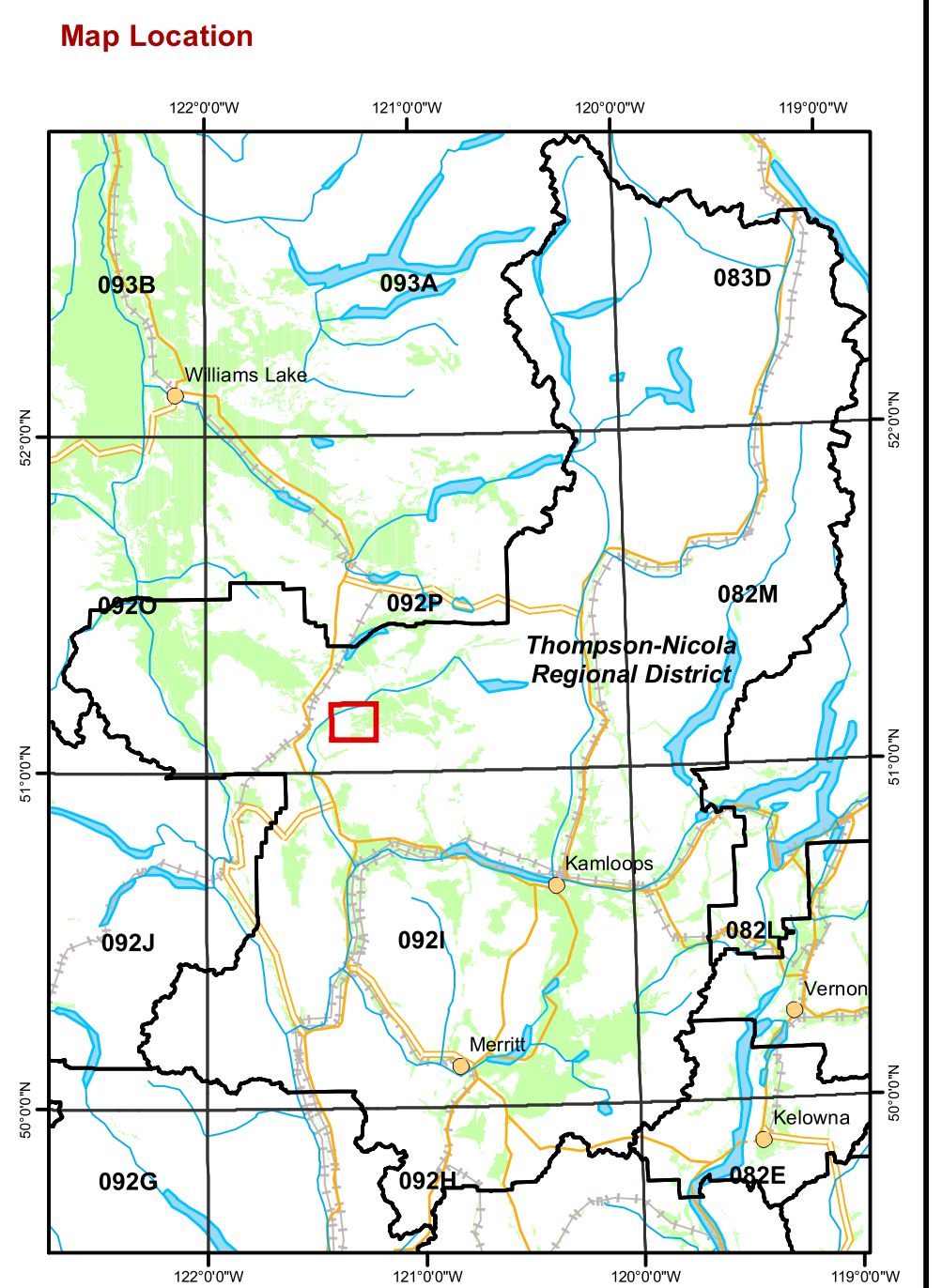
92P.026  
92P.026  
92P.026

92P.014



Map Amendment History as of 2007

Date	Application



Agricultural Land Commission  
 133-4940 Canada Way,  
 Burnaby B.C. V5G 4K6  
 Phone: (604) 660-7000  
 Fax: (604) 660-7033  
 ALC Website: www.alc.gov.bc.ca

This map represents Agricultural Land Reserve lands within the Thompson-Nicola Regional District, designated by Resolution #596/2006 of the Agricultural Land Commission.  
 Map created March 2008

Map compiled by the Geographic Information Systems Department, Agricultural Land Commission.  
 Base Mapping Sources:  
 Mapping control: B.C. Government  
 Planimetric: TRIM  
 Cadastral: Integrated Cadastre Initiative  
 The Agricultural Land Commission assumes no liability for the accuracy of the base mapping information.

- Agricultural Land Reserve
- Regional District Boundaries
- Municipal Boundaries
- Property Boundaries
- Indian Reserves

Contour Interval 20 metres  
 B.C. Albers Projection  
 NAD 83

REGIONAL DISTRICT  
 Thompson-Nicola  
 SCALE: 1 : 20 000  
 0 200 400 600 800 1,000 Meters

B.C.G.S. MAP REFERENCE NUMBER:  
**92P.014**