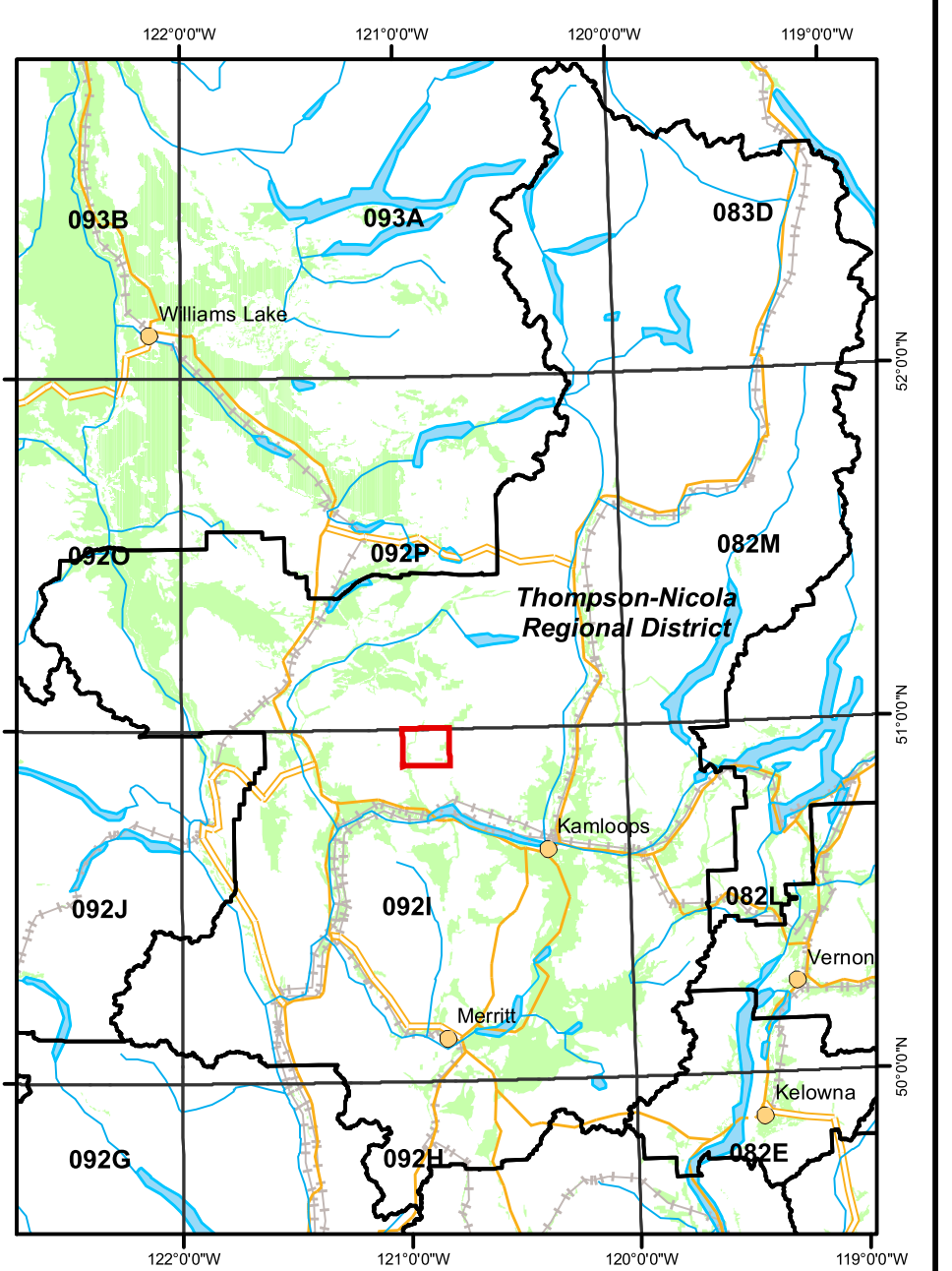


Map Amendment History as of 2007

Date	Application

Map Location



Agricultural Land Commission  
 133-4940 Canada Way,  
 Burnaby B.C. V5G 4K6  
 Phone: (604) 660-7000  
 Fax: (604) 660-7033  
 ALC Website: www.alc.gov.bc.ca

This map represents Agricultural Land Reserve lands within the Thompson-Nicola Regional District, designated by Resolution #596/2006 of the Agricultural Land Commission.

Map created March 2008

Map compiled by the Geographic Information Systems Department, Agricultural Land Commission.

Base Mapping Sources:  
 Mapping control: B.C. Government  
 Planimetric: TRIM  
 Cadastral: Integrated Cadastre Initiative

The Agricultural Land Commission assumes no liability for the accuracy of the base mapping information.

- Agricultural Land Reserve
- Property Boundaries
- Regional District Boundaries
- Indian Reserves
- Municipal Boundaries

Contour Interval 20 metres  
 B.C. Albers Projection  
 NAD 83

REGIONAL DISTRICT  
 Thompson-Nicola  
 SCALE: 1 : 20 000

B.C.G.S. MAP REFERENCE NUMBER:  
**921.096**