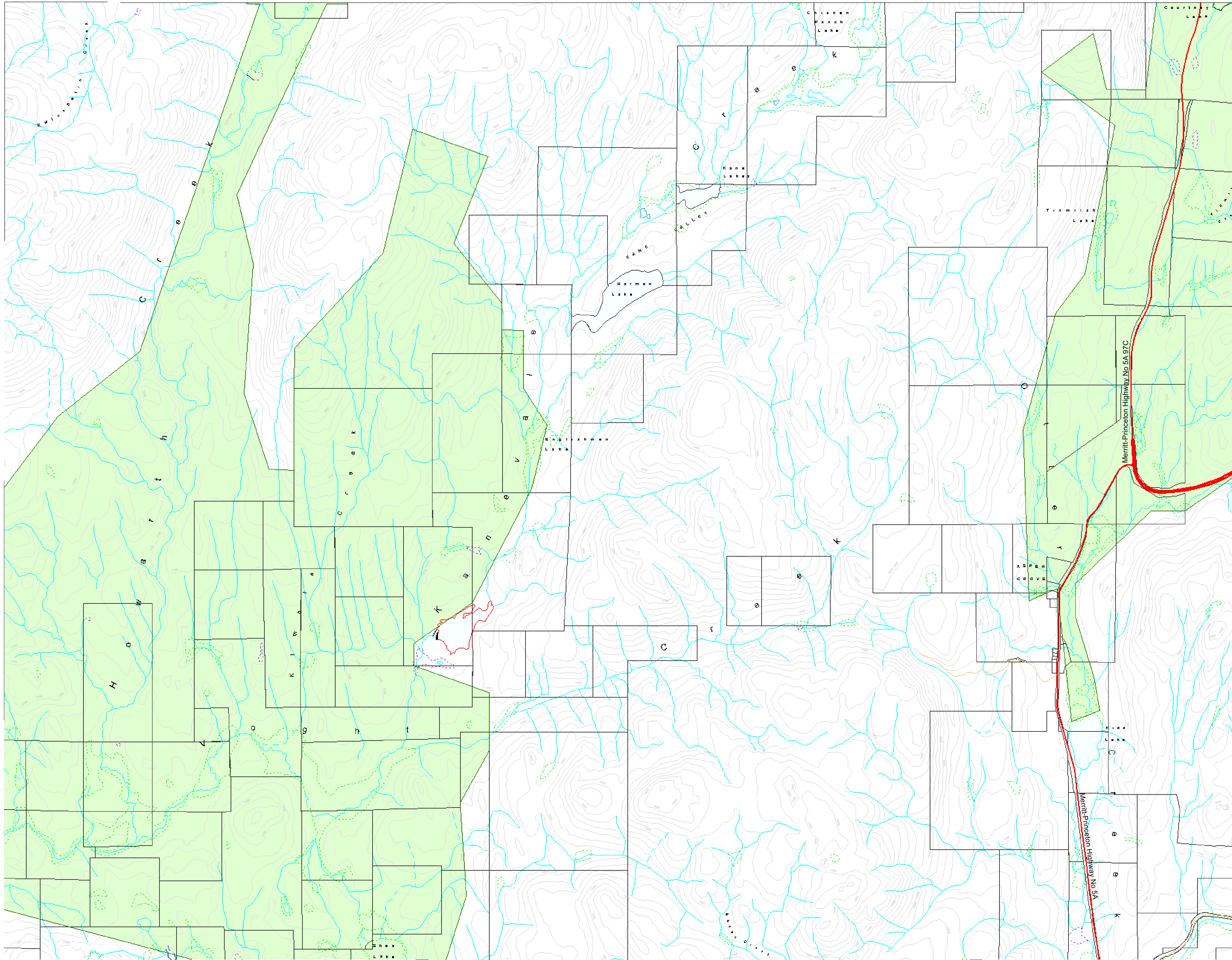


92H.096
92H.096
92H.096

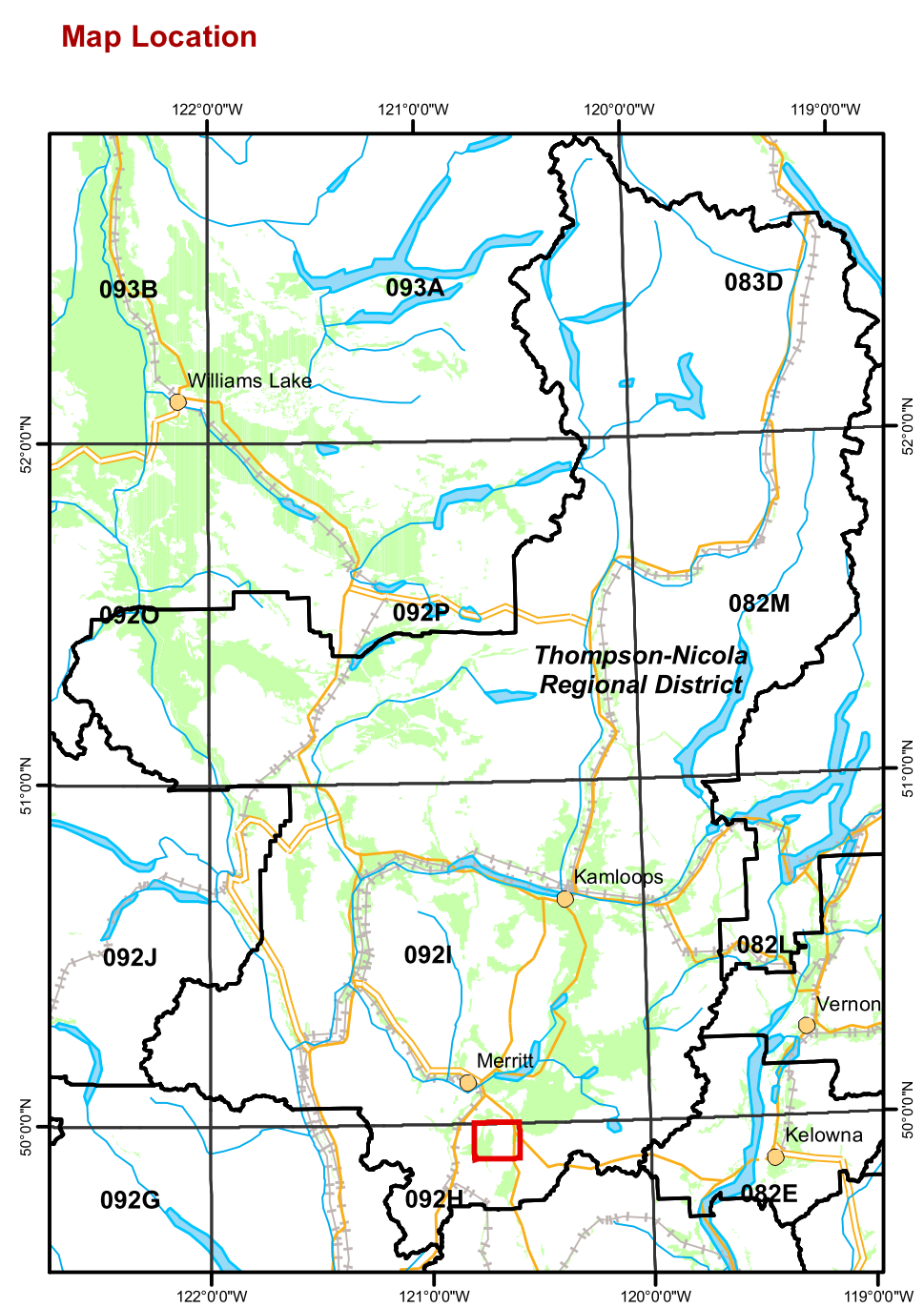
92H.007

92H.097



Map Amendment History as of 2007

Date	Application



92H.086

92H.087

92H.097



Agricultural Land Commission
 133-4940 Canada Way,
 Burnaby B.C. V5G 4K6
 Phone: (604) 660-7000
 Fax: (604) 660-7033
 ALC Website: www.alc.gov.bc.ca

This map represents Agricultural Land Reserve lands within the Thompson-Nicola Regional District, designated by Resolution #596/2006 of the Agricultural Land Commission.

Map created March 2008

Map compiled by the Geographic Information Systems Department, Agricultural Land Commission.

Base Mapping Sources:
 Mapping control: B.C. Government
 Planimetric: TRIM
 Cadastral: Integrated Cadastre Initiative

The Agricultural Land Commission assumes no liability for the accuracy of the base mapping information.

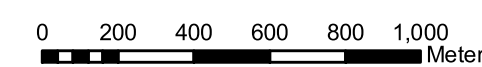
- Agricultural Land Reserve
- Property Boundaries
- Regional District Boundaries
- Indian Reserves
- Municipal Boundaries



Contour Interval 20 metres
 B.C. Albers Projection
 NAD 83

REGIONAL DISTRICT
 Thompson-Nicola

SCALE: 1 : 20 000



B.C.G.S. MAP REFERENCE NUMBER:

92H.097

92H.097